

# PLOTTER SETUP FOR PC VIA USB

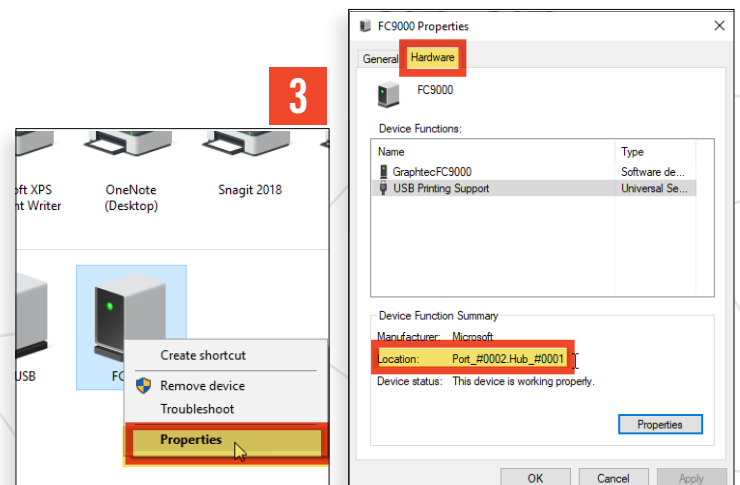
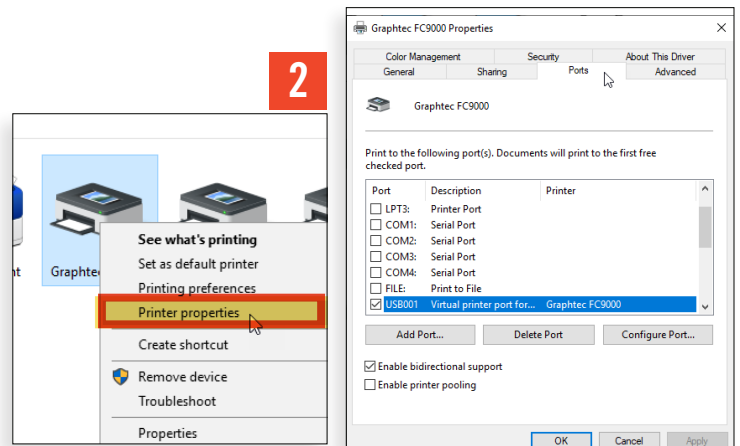
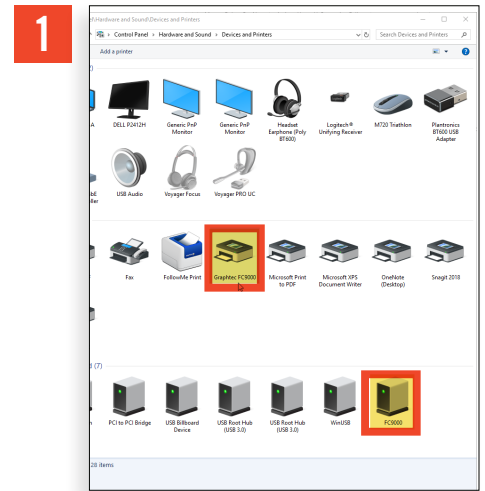
## 1 OPEN THE CONTROL PANEL APP

## 2 CLICK ON DEVICES AND PRINTERS

## 3 1. Look for your connected device under the **Printers or Unspecified Sections.**

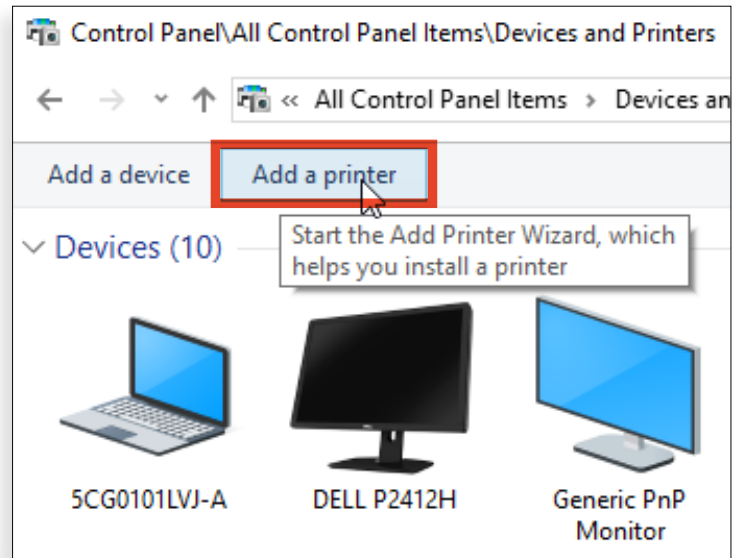
2. If you see your device in the **Printers** section then right click on the device and select **Printer Properties**. Now click on the **Ports Tab**. You can now find the port that your plotter is connected to on your PC. Make note of this location for pointing your Core Drive to your plotter.

3. If you only see your device in the **Unspecified Section** you will need to Right click on the device and select **Properties**. Now select the **Hardware Tab** then select **USB Printing Support**. Your USB port will be below in the location information. Make note of this location for pointing your Core Drive to your plotter.



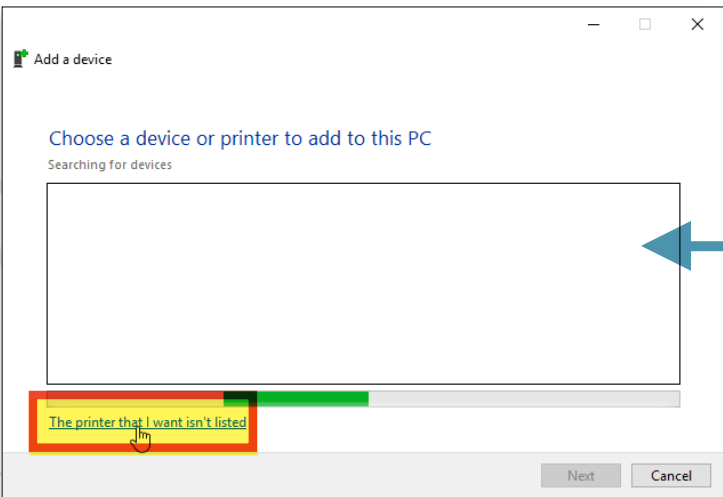
4

## CLICK ON ADD A PRINTER



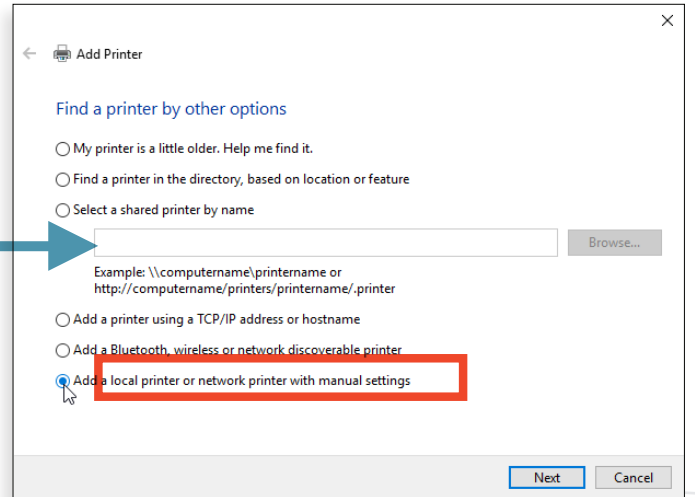
5

## IMMEDIATELY SELECT “THE PRINTER THAT I WANTED ISN’T LISTED” AND CLICK “NEXT”



6

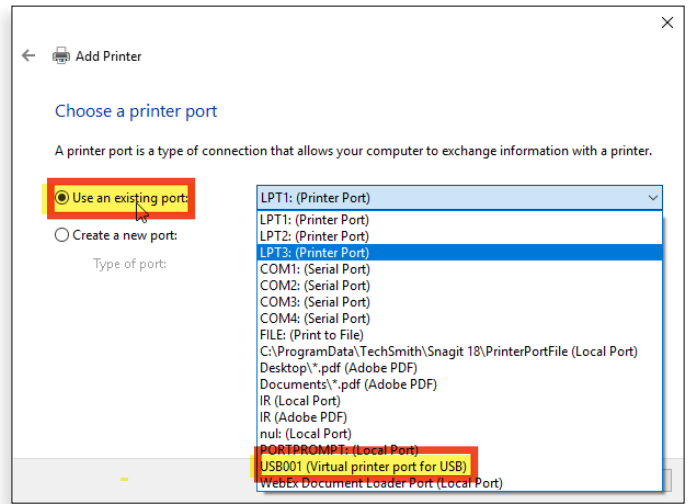
## SELECT “ADD A LOCAL PRINTER OR NETWORK PRINTER WITH MANUAL SETTINGS” AND CLICK “NEXT”



# 7

**THIS BOX WILL ALLOW THE SELECTION OF THE PORT THAT THE COMPUTER IS USING TO COMMUNICATE WITH THE PLOTTER. IF THE PLOTTER IS CONNECTED WITH A USB CORD THEN YOU WILL MOST LIKELY SEE A SELECTION OF USB001, USB002, USB003 AND SO ON.**

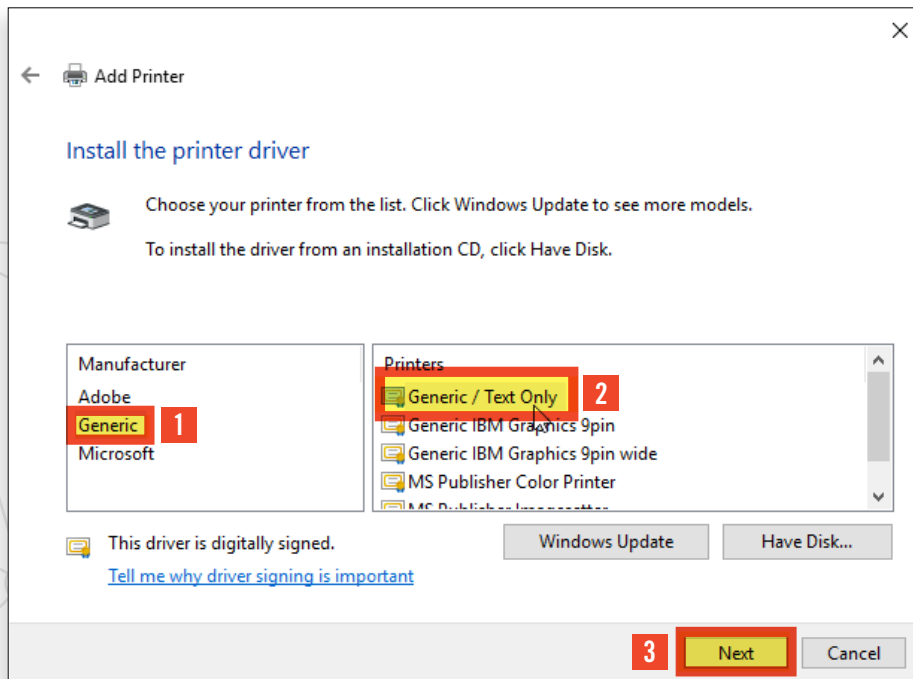
Find the port previously noted in the list and select. After selecting the port, select next.



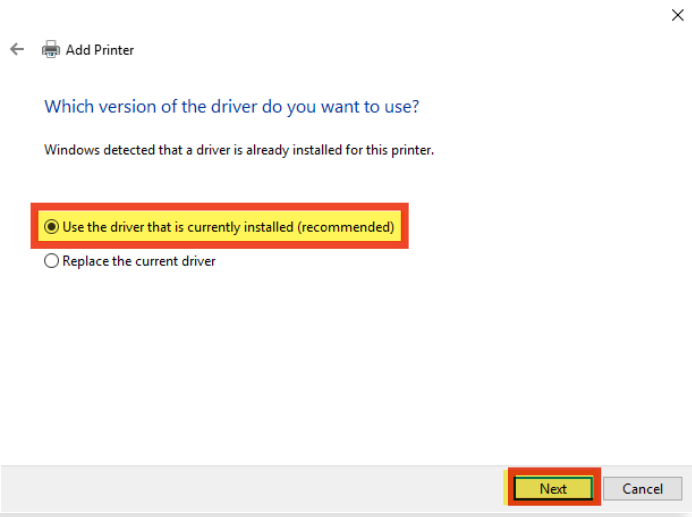
# 8

**THIS BOX IS THE PRINTER DRIVER.**

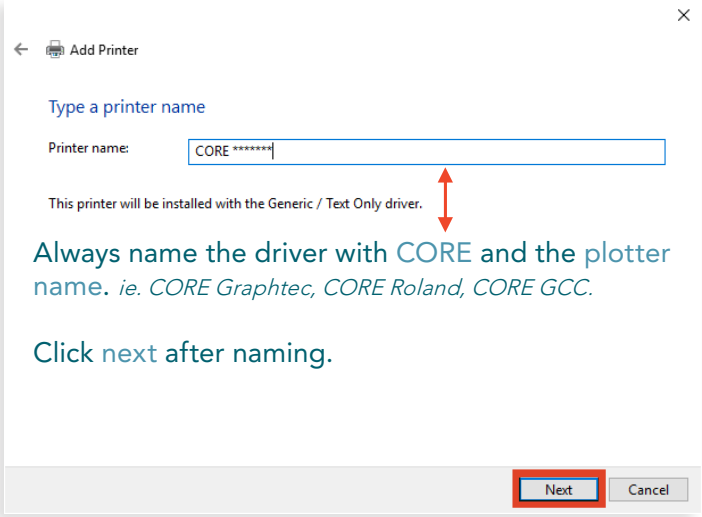
1. In the Manufacturer box select "Generic".
2. In the Printers box select "Generic / Text Only".
3. Then click "Next".



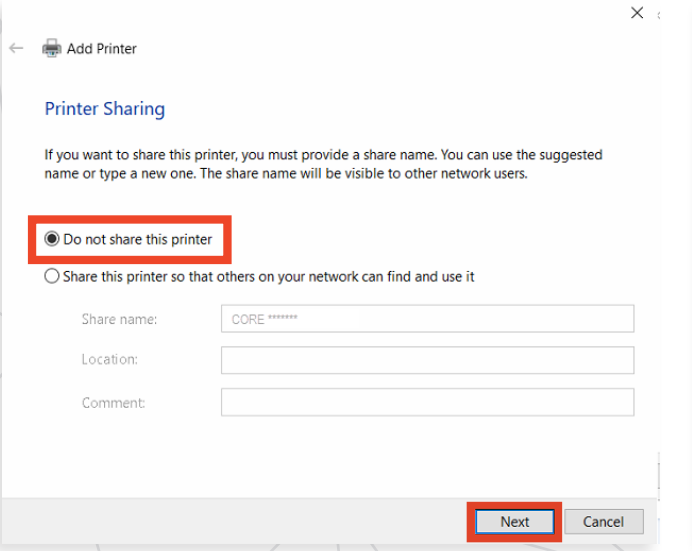
**9** IF THE FOLLOWING BOX COMES UP, THEN SELECT TO USE THE CURRENTLY INSTALLED DRIVER AND CLICK NEXT.



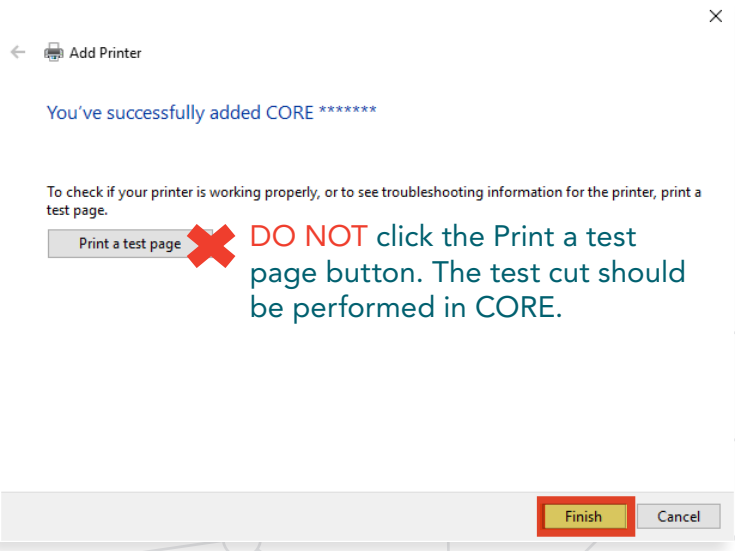
**10** THIS WINDOW ALLOWS YOU TO NAME THE PLOTTER DRIVER.



**11** IF THE FOLLOWING BOX COMES UP, THEN SELECT DO NOT SHARE THIS PRINTER AND CLICK NEXT.



**12** CLICK FINISH IN THE BOTTOM RIGHT OF THIS WINDOW.



13

1. Open Core
2. Pull up a cutboard
3. Look for the Core Plotter that you named (we recommend using Core in the name to avoid confusion) and select it.
4. Your plotter is now set up in Core.
5. Now try to cut a small pattern such as a door cup.

