



# COVER STYL'

SMART INTERIOR DESIGN









# LET'S MAKE A **CHANGE** AS **WHY REPLACE WHEN YOU CAN UPGRADE ?**

As yes when using our solution you are contributing to help change the world!

This is part of making a change, being part of a new thinking generation.

Thank you for being part of the change!

**RECYCLE | RECUPERATE | RECOVER | REUSE**

## Technical Information

### Interior Film

Our stretchable architectural film is a decorative film with adhesive that is applicable on site.

Recreate your world with our stretchable architectural film. It is an ideal way to finish many environments on site with little or no down time. Our stretchable architectural film is used extensively for interior applications such as Hotels, Shops, Washrooms, Student accomodation, Elevators, etc. With its light weight and minimal thickness, our stretchable architectural film is a popular choice for cruise ship interiors. Our stretchable architectural film offers hundreds of patterns including Solid Colour, Metallic, Glitter, Leather, Fabric, Soft Touch and also natural material replications such as Wood, Stone and Marble. Our stretchable architectural film's original pressure sensitive adhesive ensures clean, fast installation on a variety of substrates. With its superior flexibility, our stretchable architectural film can be installed on highly detailed and 3D surfaces.

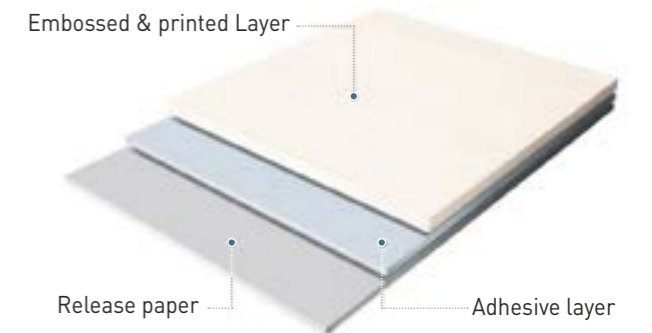
### Product Structure

Our stretchable architectural film is a printed film with adhesive

1. Embossed & printed film layer (vinyl-chloride plastic)
2. Simplified adhesive (acrylic plastic)
3. Release paper

The above is a representative structure of our stretchable architectural film .

The actual structures and materials may be slightly different for each series.



### Easy to install with Air release adhesive

Our stretchable architectural film

is applied using an Acryl type adhesive, which has an adhesive surface with grid grooves for air-release between the film and the substrate.

The air is released along these grooves, enabling the film to be quickly and easily affixed to large or complex surfaces.

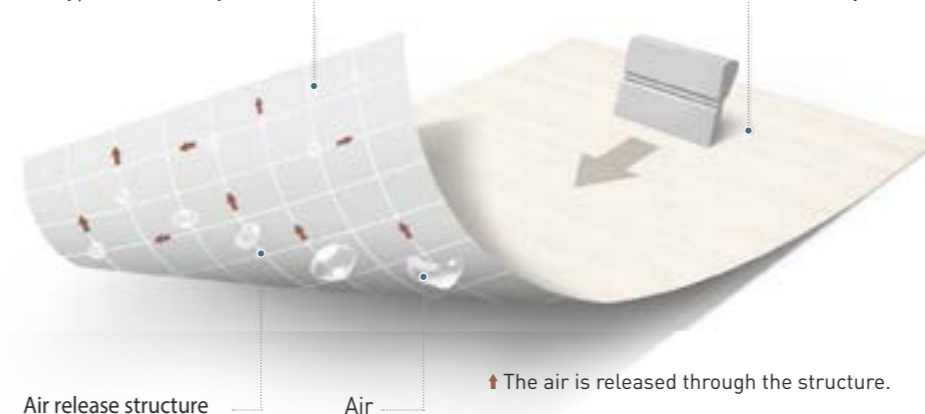
This provides a higher quality finish.

Facilitates the release of air when the film is affixed, enabling easy application to large or complex surfaces.

### Air release structure

EA Type adhesive layer

Film layer



↑ The air is released through the structure.



Enabling the film to be installed quick and easy.

## Environment

### We pay attention to nature

Our stretchable architectural film is an eco-friendly film that care about healthy environment.

- Free from harmful heavy metals (lead, cadmium, mercury, hexavalent chromium, etc)
- Formaldehyde (HCHO), the substance that causes sick house syndrome, is not released.
- Minimized release of volatile organic compounds (TVOC, toluene, etc )
- It meets the safety standard (KF mark standard) applied to wallpaper and paperboard.
- Meets the safety requirements for hazardous chemicals in the Common Safety Standards of Children's Products.
- Excellent maintenance and anti-mold function, which helps to maintain a pleasant surrounding environment.

Heavy Metal [Pb, Cd, Hg, CrVI]		Formaldehyde [HCHO]		Phthalate	
<b>Standard</b>	None detected	<b>Standard</b>	None detected	<b>Standard</b>	None detected
[ Pb ] 5 mg/kg		0.12 mg/m <sup>3</sup> h		[ DEHP ] less than 0.1%	
[ Cd ] 0.5 mg/kg				[ DBP ] less than 0.1%	
[ Hg ] 2 mg/kg				[ BBP ] less than 0.1%	
[ CrVI ] 1 mg/kg					

'Hazardous chemicals' criteria for the **Common Safety Standards for Children's Products**

Hazardous Substances [Sb, As, Ba, Cd, Cr, Pb, Hg, Se]			
<b>Standard</b>	Satisfactory	<b>Standard</b>	Satisfactory
[ Sb ] 60 mg/kg		[ Cr ] 60 mg/kg	
[ As ] 25 mg/kg		[ Pb ] 90 mg/kg	
[ Ba ] 1000 mg/kg		[ Hg ] 60 mg/kg	
[ Cd ] 75 mg/kg		[ Se ] 500 mg/kg	

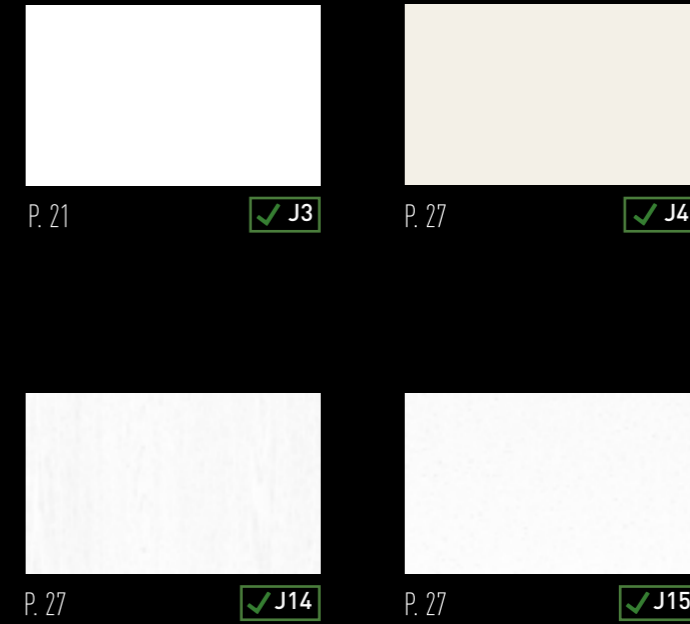
## Safety

### We pay attention to Safety

Our stretchable architectural film is a safe interior film that can be used in any environment with excellent flame retardancy and quality stability.

Flame Retardancy [Certified by the Korean Fire Industry Technical Institute]		Stain resistance	
Carbonization length less than 20cm	Satisfactory		
Carbonization area less than 30cm <sup>2</sup>		No Stains	
Flame retardant certification less than 3sec			
Smoke density 200 Ds			

Obtain the certificate, Introduction of company for bidding construction projects, construction guide of our products by inquiring with our head office or distributor.



# PRINTABLE





BEFORE



AFTER



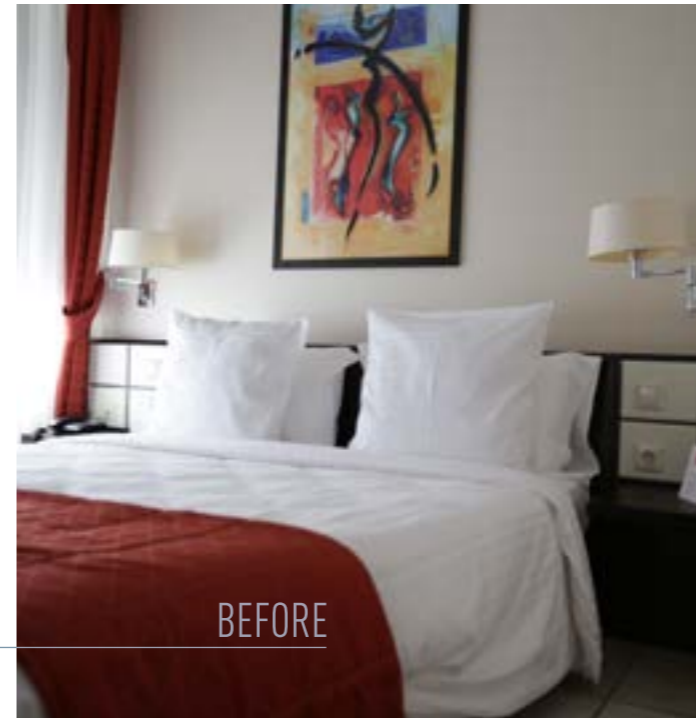
D4



CT83

RECYCLE, RECUPERATE, RECOVER & REUSE.  
THE INNOVATION OF RENOVATION!

HUNDREDS OF DOORS RENOVATED FAST & WITH STYLE



BEFORE



AFTER



BEFORE



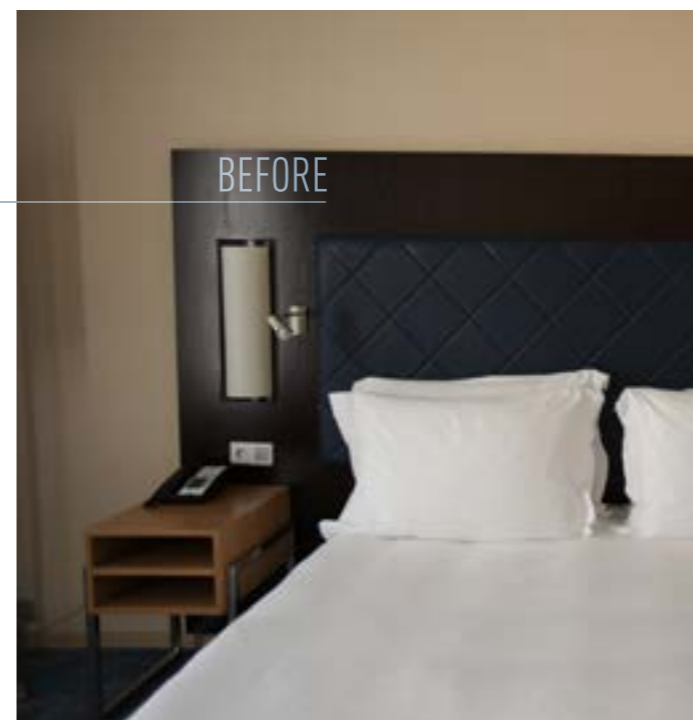
AFTER



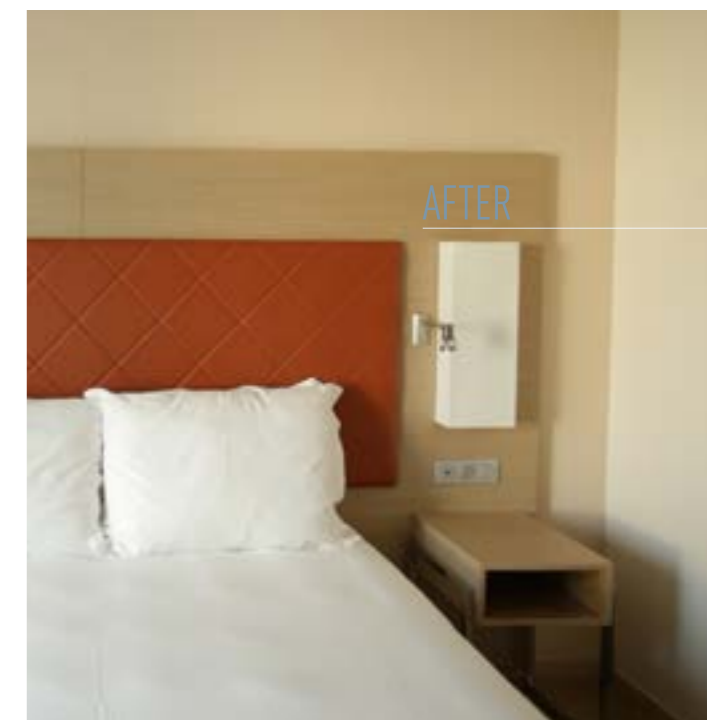
NE41

THE LIMITS ARE YOUR IMAGINATION,  
DOORS MADE OF LEATHER? ANYTHING IS POSSIBLE!

DON'T WAIT ANY LONGER, SPARE BETWEEN 50-70%  
FROM TRADITIONAL RENOVATION. AN INVESTMENT  
WHICH WILL PAY BACK



BEFORE



AFTER



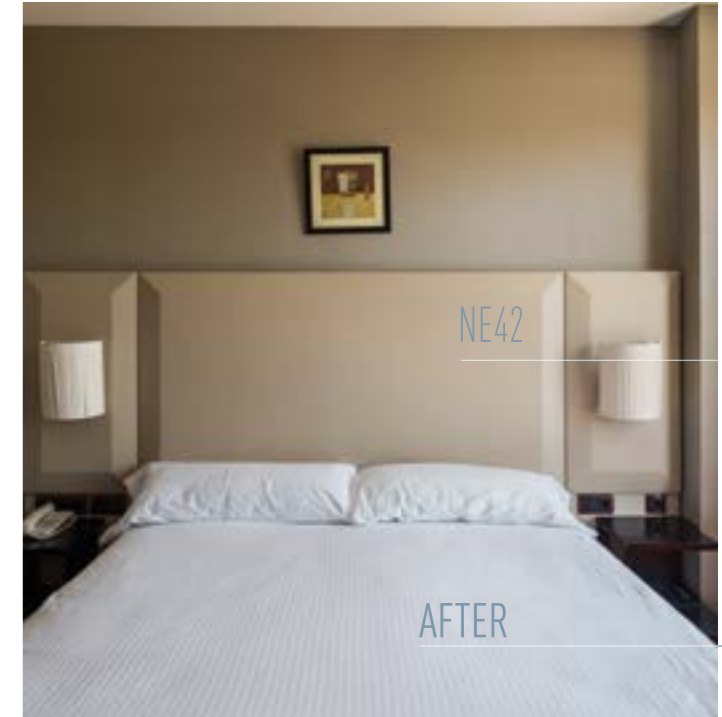
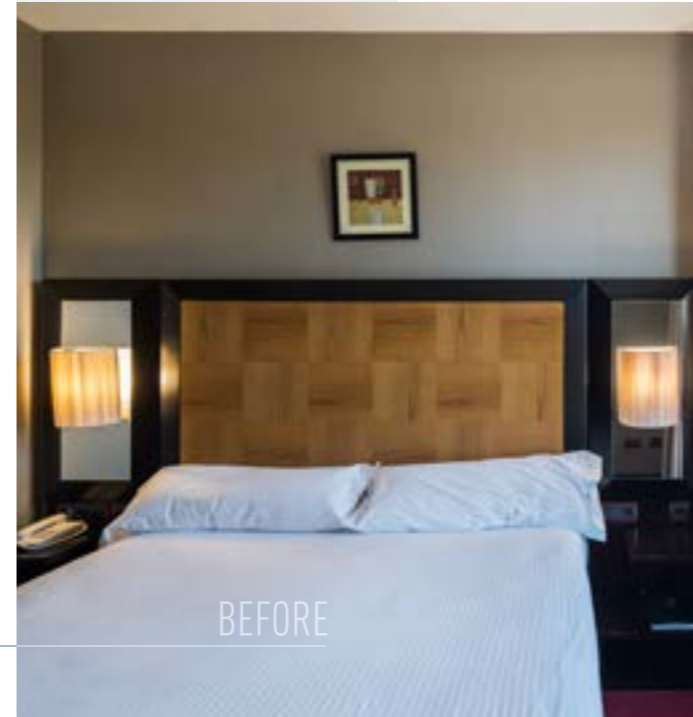
B8



M  
HOTEL  
MAYORAZGO  
2020 | Madrid, Spain



PRINCESA DE EBORE  
APARTAMENTOS  
2019 | Madrid, Spain



**AFFORDABLE, STYLISH & SUITABLE FOR HUMID ENVIRONMENT – YES!**



**REFURBISH WITHOUT HAVING TO CLOSE OR DISCONTINUE YOUR DAILY ACTIVITY, IT'S POSSIBLE!**



# BETTER, GLITTER, STRONGER



LIGHT UP YOUR EVERYDAY LIFE

R6

✓ R6



✓ R5



✓ R7



✓ R8

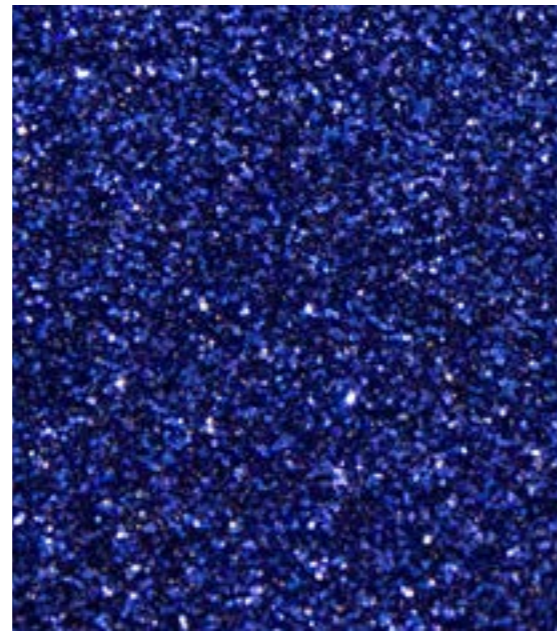


✓ R9

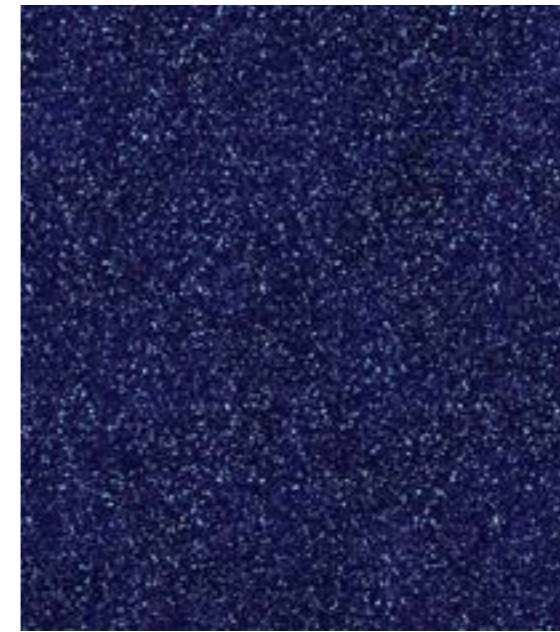




✓R10



✓R11



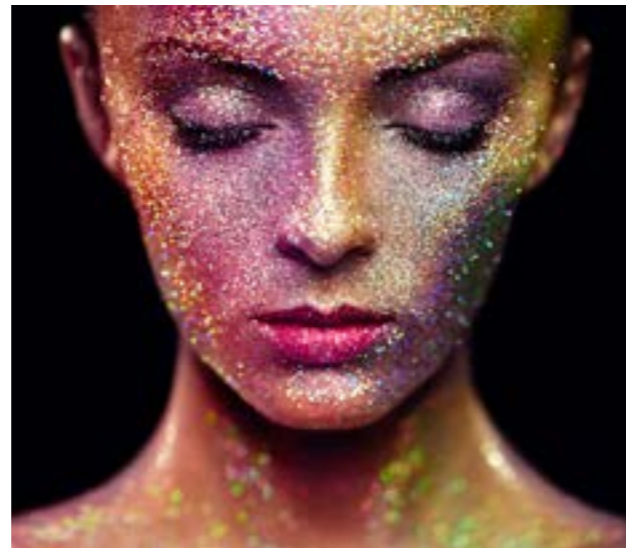
✓R15



✓R16



✓R12



✓R17



✓R13



✓R14



✓R18



✓R19

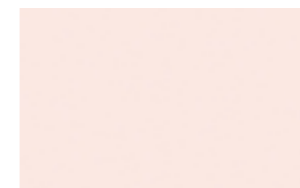


OI

Look at life in colour with our Solid Colour range! Each colour creates a unique atmosphere. Whether “pop” or sober, they embellish your walls and furniture. What are you waiting for? Give your bedrooms or lounges their own unique personality!

## Solid Colour

Unique environments completed with colour and texture. The space that draws attention without needing to add eye-catching decorations. Express your own unique self.



⊖ NF01



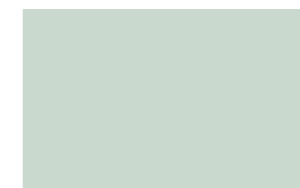
⊖ NF03



⊖ NF02



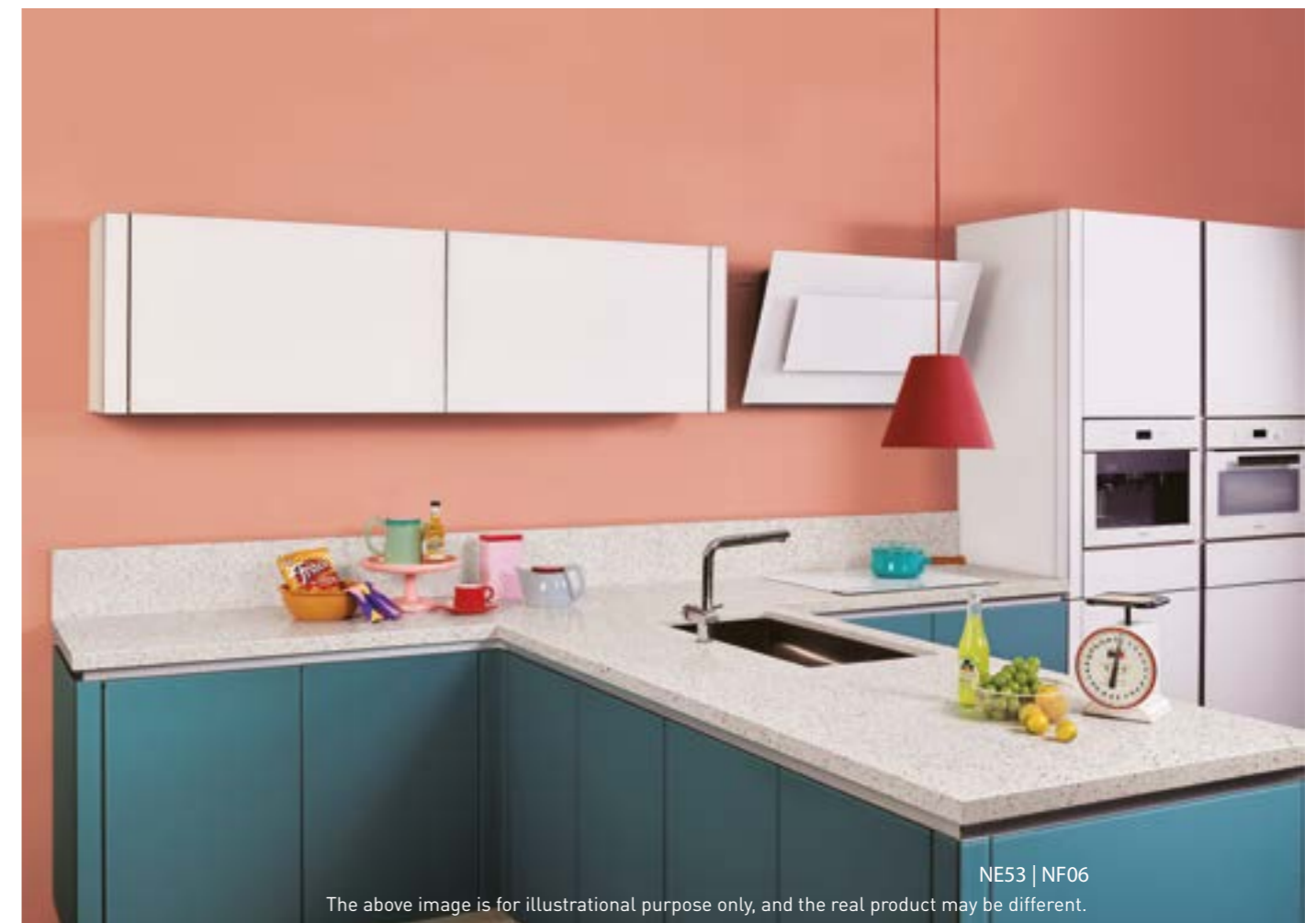
⊖ RM16



✓ NE54



⊖ RM15



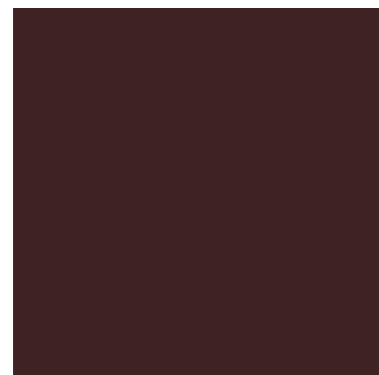
NE53 | NF06

The above image is for illustrational purpose only, and the real product may be different.





# SOFT TOUCH



SOFT TOUCH NF12



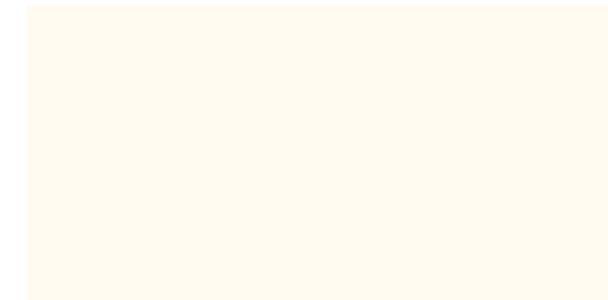
SOFT TOUCH NF13



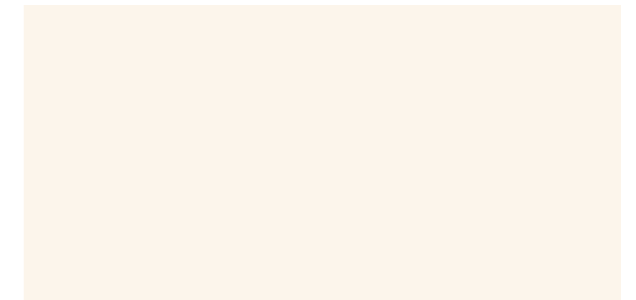
SOFT TOUCH NF14



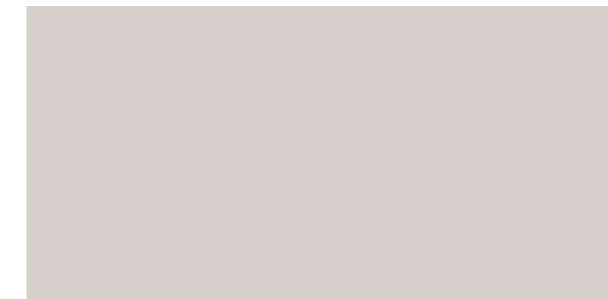
Our architectural film Soft Touch Series is a premium product featuring a differentiated special surface with texture finish that has outstanding contamination and scratch resistance. The gentle visual effects and luxurious touch further upgrades the class of the space.



SOFT TOUCH NE77



SOFT TOUCH NF15



SOFT TOUCH NF16



SOFT TOUCH NE78



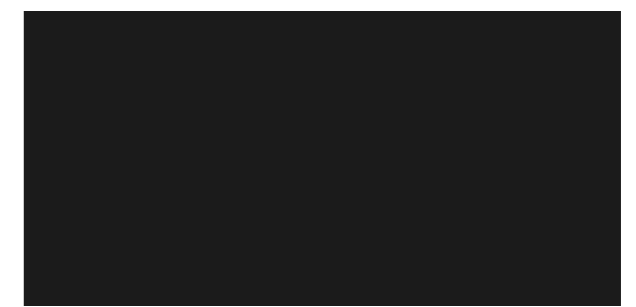
SOFT TOUCH NE79



SOFT TOUCH NE82



SOFT TOUCH NE80



SOFT TOUCH NE81

# Painted Wood



NF19

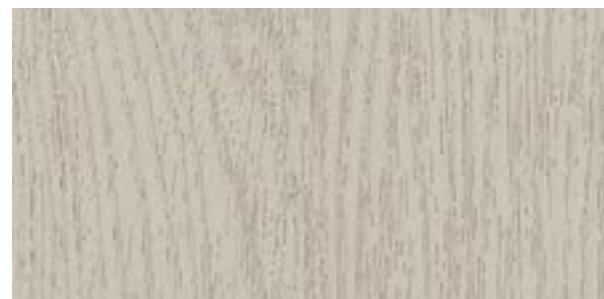
The above image is for illustrational purpose only, and the real product may be different.



Ⓞ NF17



Ⓞ NF18



✓ NF19



Ⓞ NF20



Ⓞ AC01



Ⓞ AC04



✓ J17



Ⓞ NF21



Ⓞ AB02



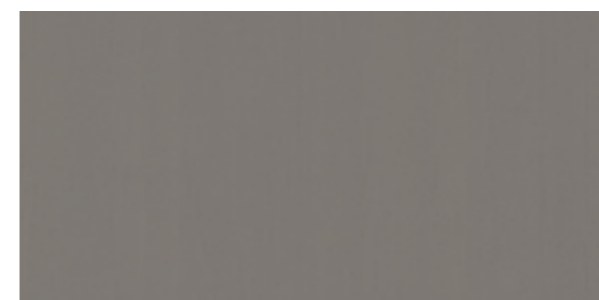
Ⓞ NF23



Ⓞ AB03



Ⓞ NF22



✓ NE46



✓ J18



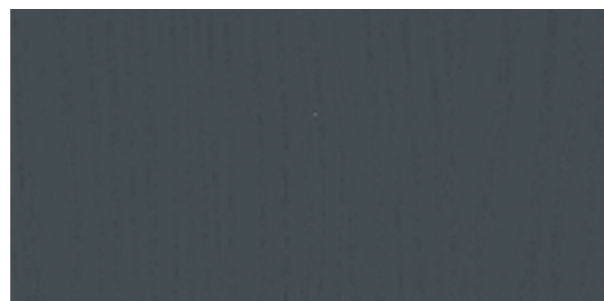
# Painted Wood



⊘ NE45



⊘ AB06



✓ AB05



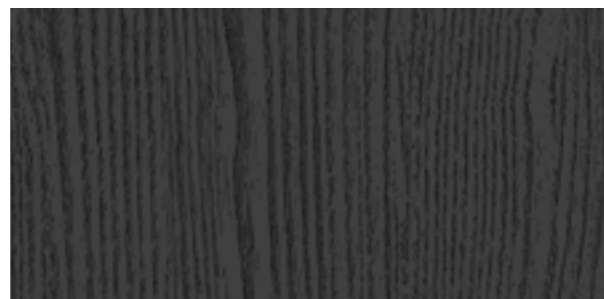
⊘ NF24



⊘ AB07

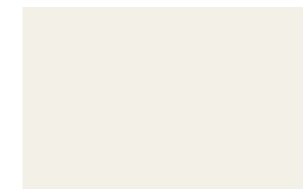


⊘ NF25

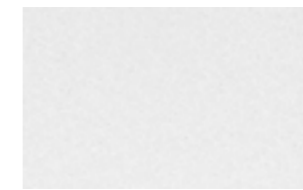


⊘ NF26

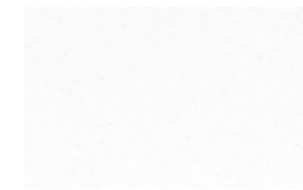
# Texture



✓ J4



✓ J7



✓ J15



✓ MA16



✓ Q2



⊘ MA12



⊘ MA10



✓ J14



⊘ LP01



✓ Q1



⊘ MA14



✓ J2



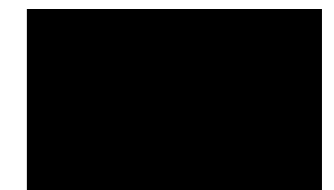
✓ NE11



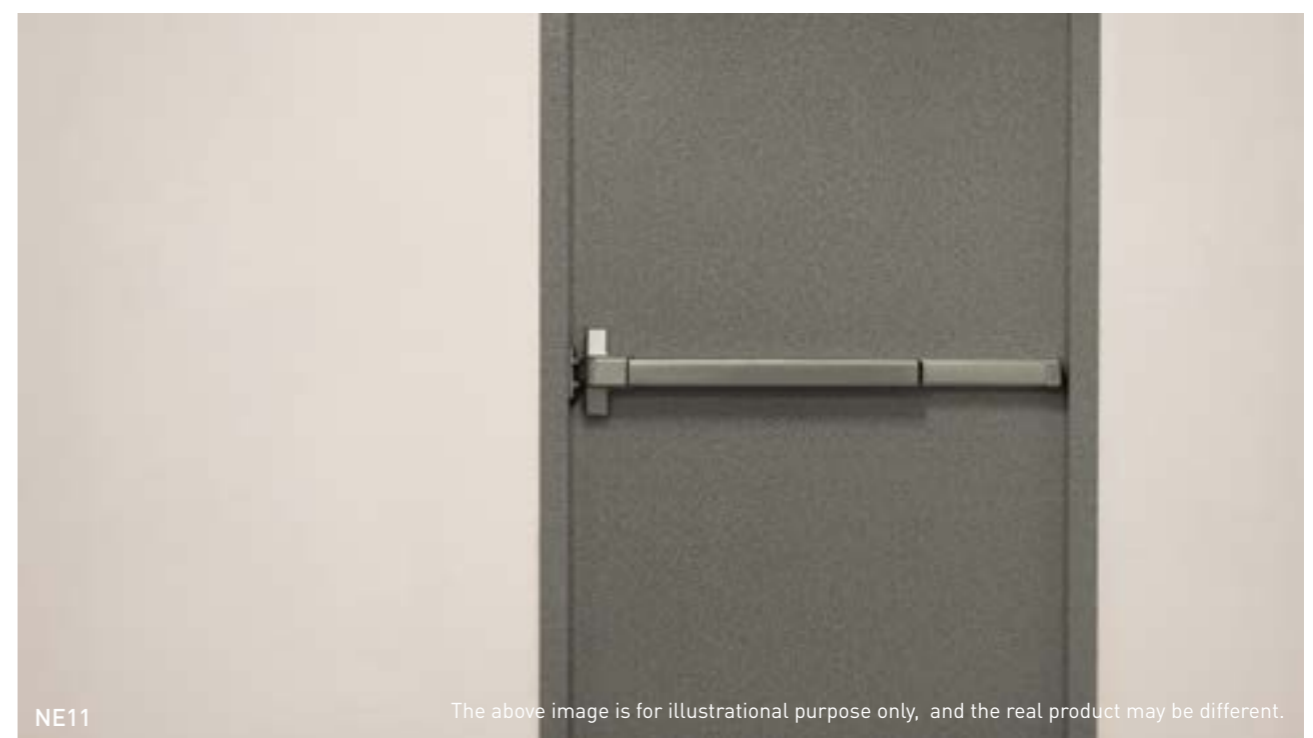
✓ J16



✓ J9



✓ J5



02

Inspired by a number of timber species, our Wood range reveals the charm of your rooms, giving them a natural touch. Are you dreaming of an interior with a “Swiss chalet” or Canadian-style look? An oak, beech, teak look....Placed in strategic places, such as a table or a wardrobe door, you would only need the smell of the woods and birdsong to transport you to the middle of the forest.

---

## Wood



Wood texture naturally fits anywhere



# Origin Wood



⊘ NF27



✓ NF28



# Origin Wood



✓ NF29



⊘ NF30



NF29

The above image is for illustrational purpose only, and the real product may be different.



# Origin Wood



⊘ NF31



✓ NF32



⊘ NF33



NF32

The above image is for illustrational purpose only, and the real product may be different.



# Origin Wood



✓ NF34



⊗ NF35

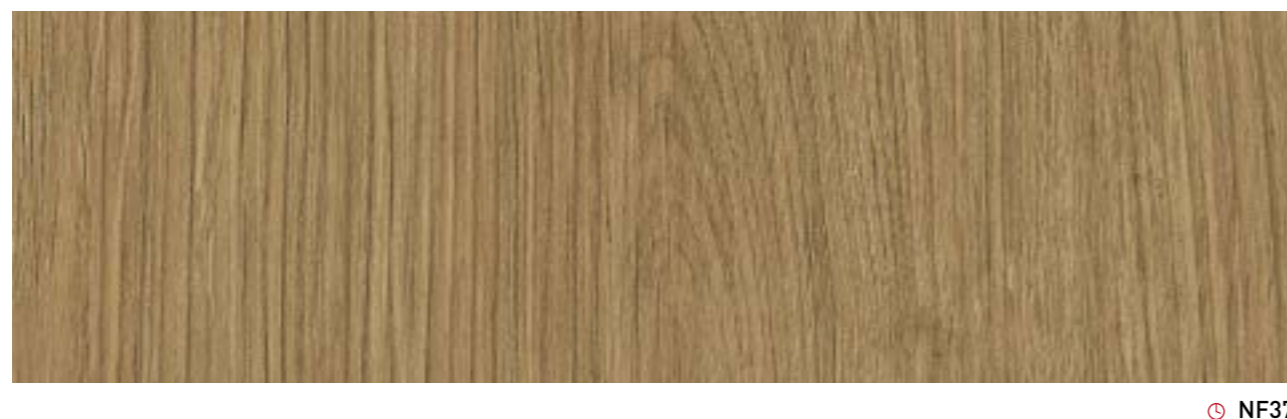
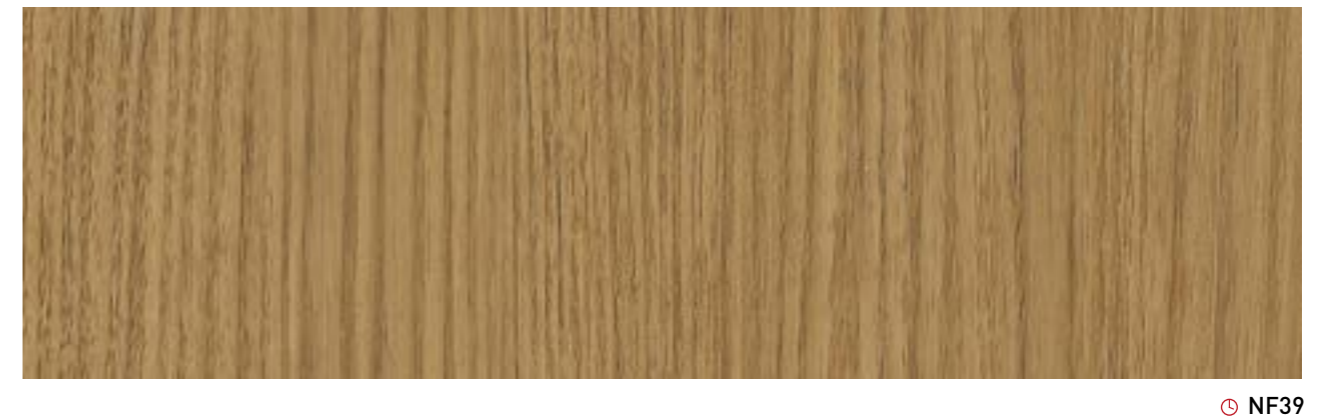
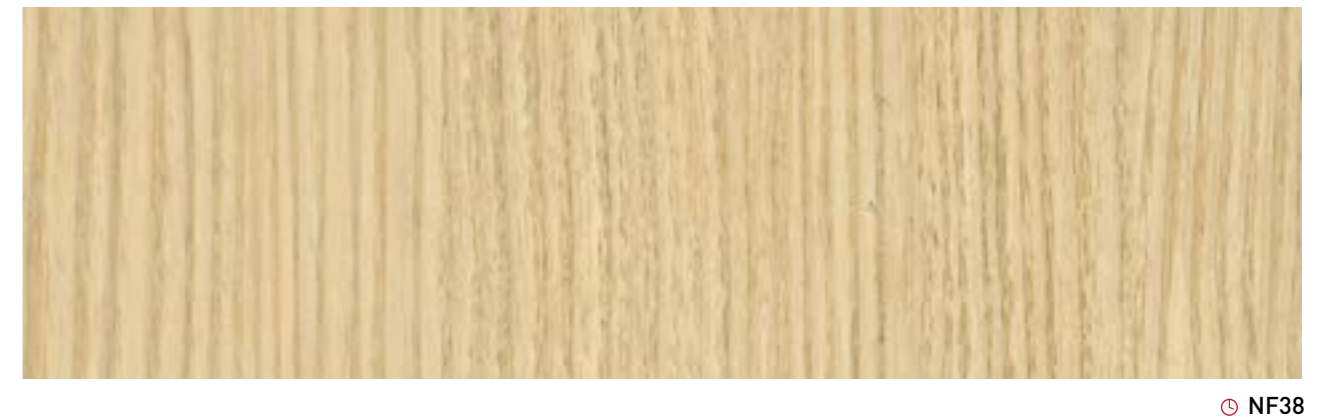
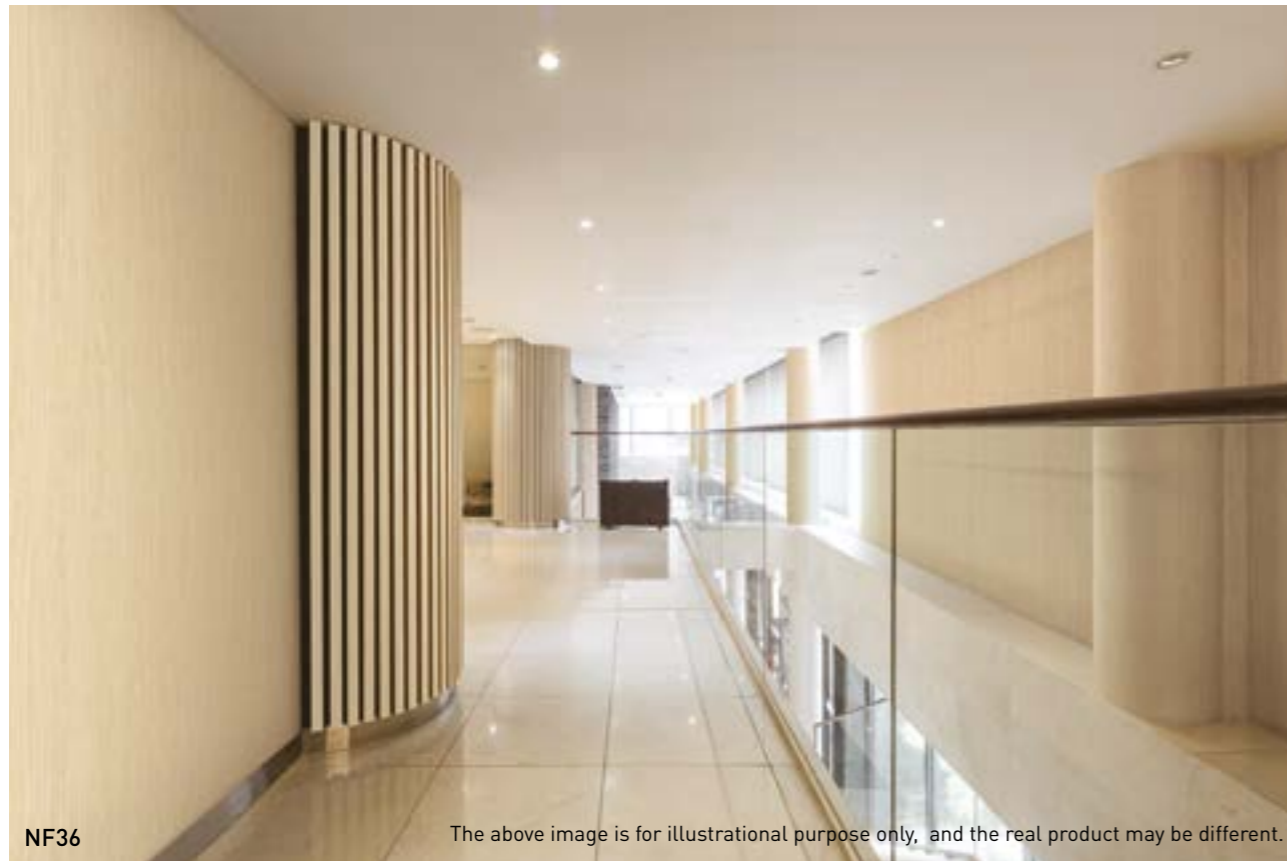


NF34

The above image is for illustrational purpose only, and the real product may be different.



# Origin Wood





# Origin Wood



NF40

The above image is for illustrational purpose only, and the real product may be different.



✓ NF40



NF41

✓ Available ⓧ On request



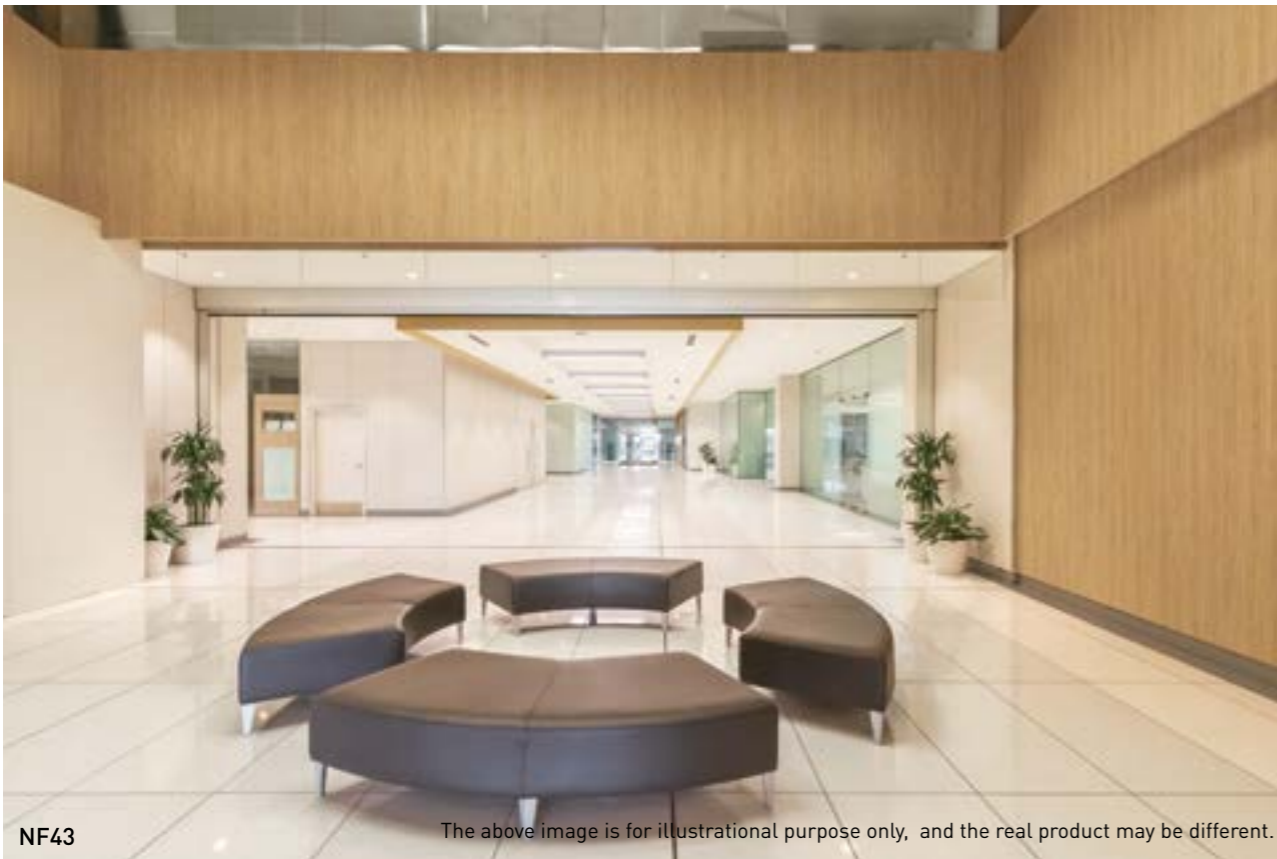
# Origin Wood



🚫 NF42



✅ NF43



NF43

The above image is for illustrational purpose only, and the real product may be different.



NF44

The above image is for illustrational purpose only, and the real product may be different.



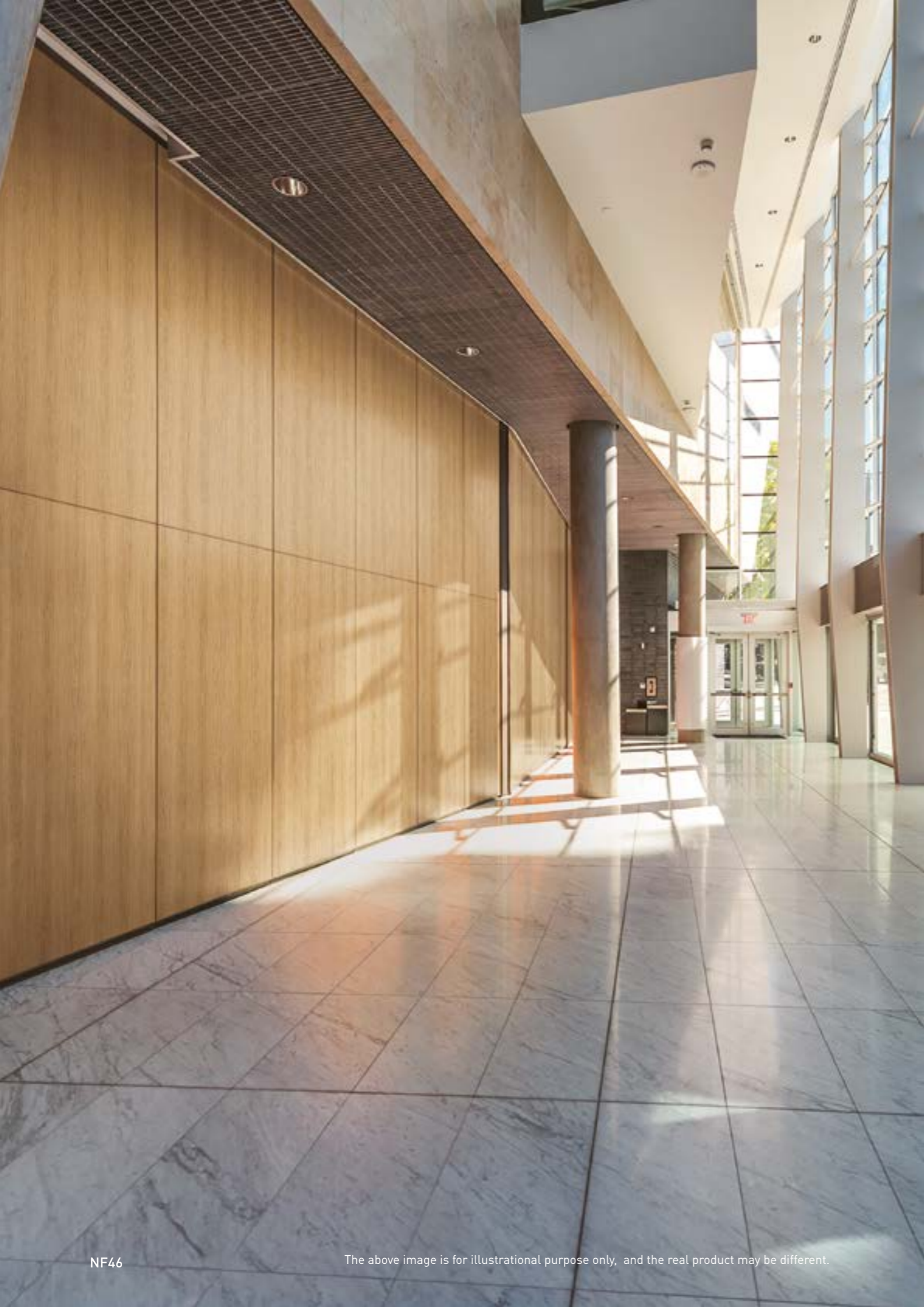
🚫 NF45



✅ NF44



# Origin Wood



✓ NF46



⊘ NF47

✓ Available ⊘ On request



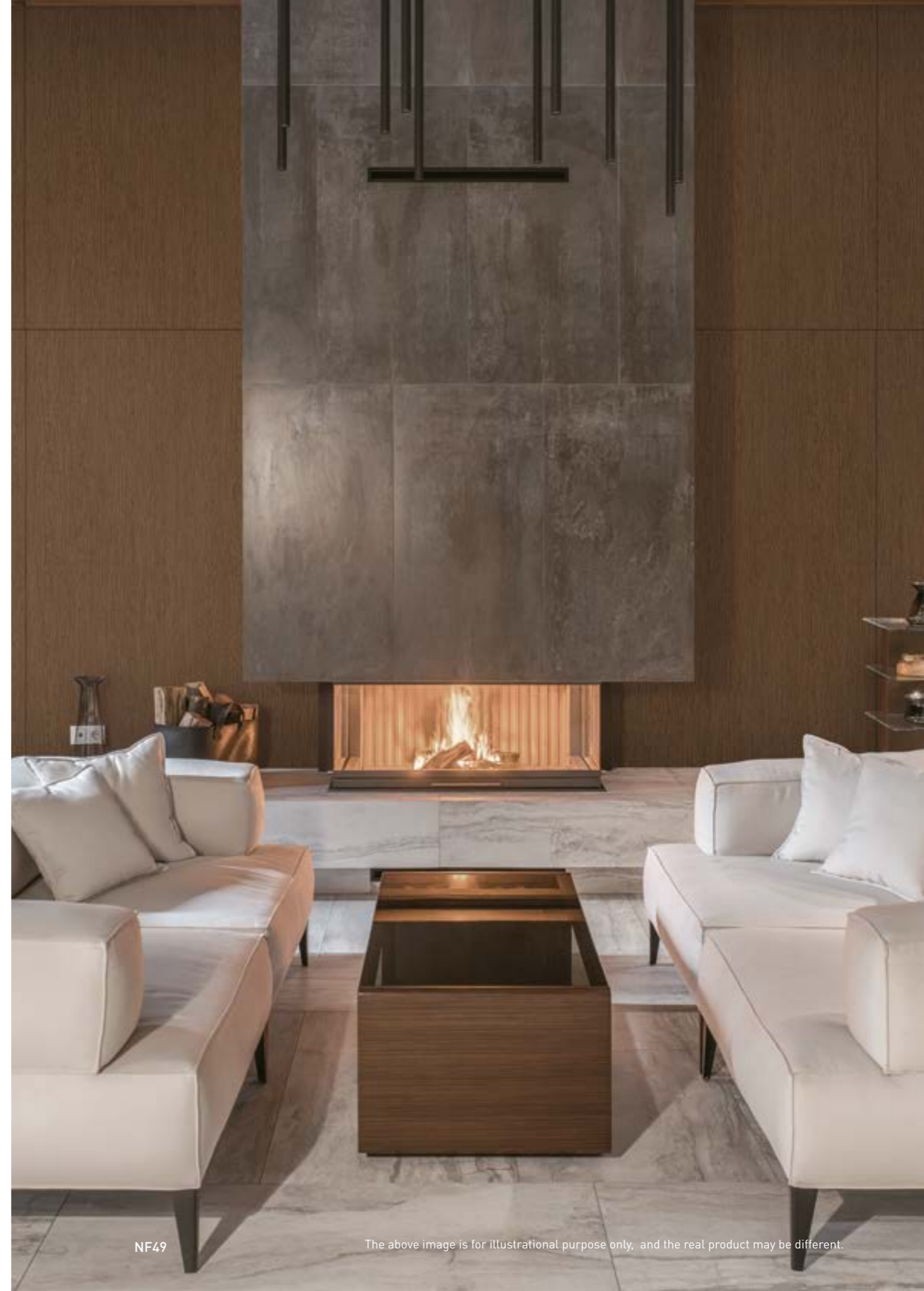
# Origin Wood



🕒 NF48



✅ NF49



NF49

The above image is for illustrational purpose only, and the real product may be different.



# Origin Wood



🕒 NF50



🕒 NF51



🕒 NF52



NF50

The above image is for illustrational purpose only, and the real product may be different.



# Origin Wood



🕒 NF53



🕒 NF54



NF53 | NF54

The above image is for illustrational purpose only, and the real product may be different.



NF55 | NF56

The above image is for illustrational purpose only, and the real product may be different.



✅ NF55



✅ NF56



# Suede Wood



✓ B50



⊖ AZ10



⊖ AZ02



⊖ AZ03



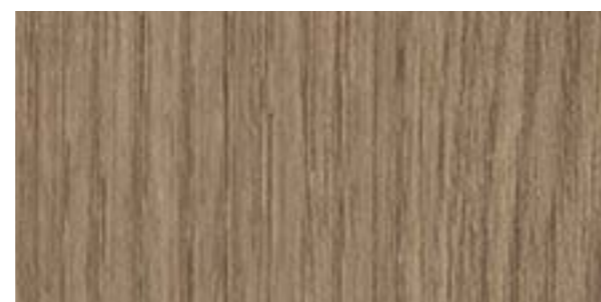
⊖ AZ01



⊖ AZ04



⊖ AZ06



✓ AZ07



# Premium Wood



⊘ AF07



⊘ AF02



⊘ AF09



✓ AF03



✓ AF08



AF08

The above image is for illustrational purpose only, and the real product may be different.



⊘ AF05



⊘ AF06



✓ AF10



⊘ AF01



AF10

The above image is for illustrational purpose only, and the real product may be different.



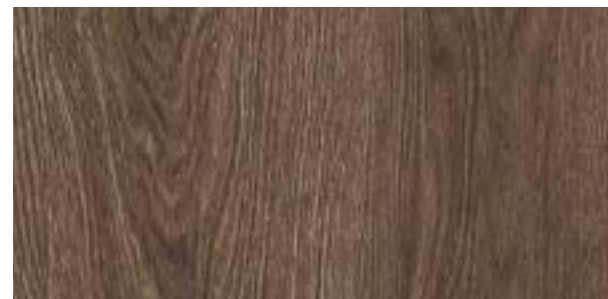
# Rich Wood



✓ NF57



⌚ NF58



⌚ NF59



⌚ NF60



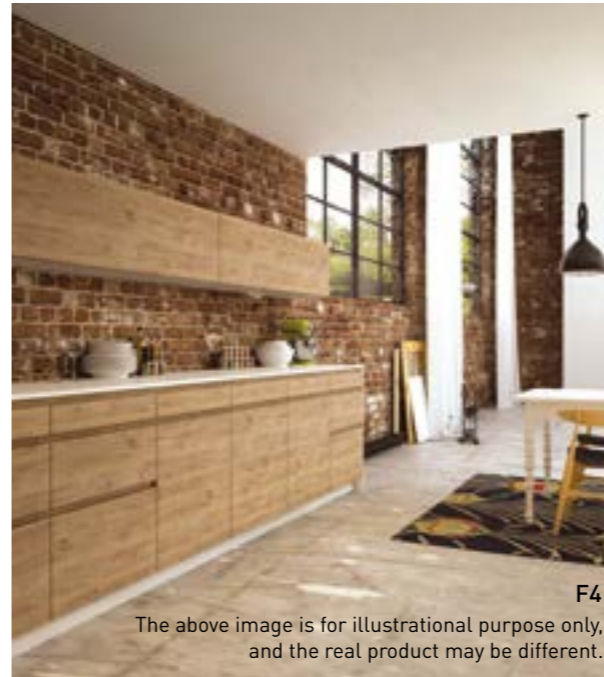
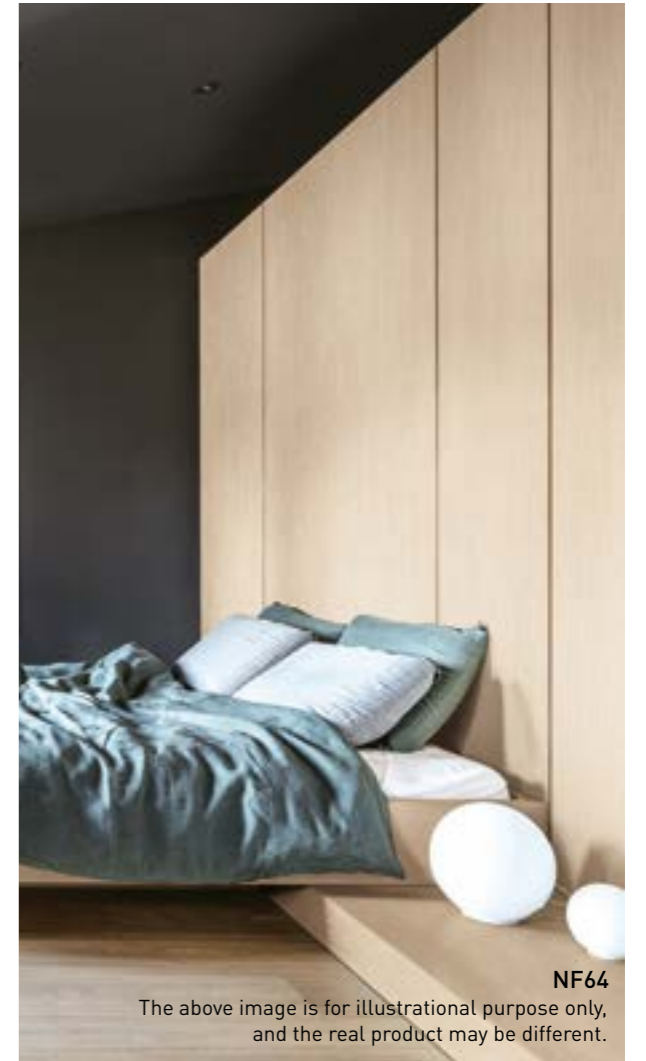
⌚ NF64



⌚ NF62



⌚ NF63



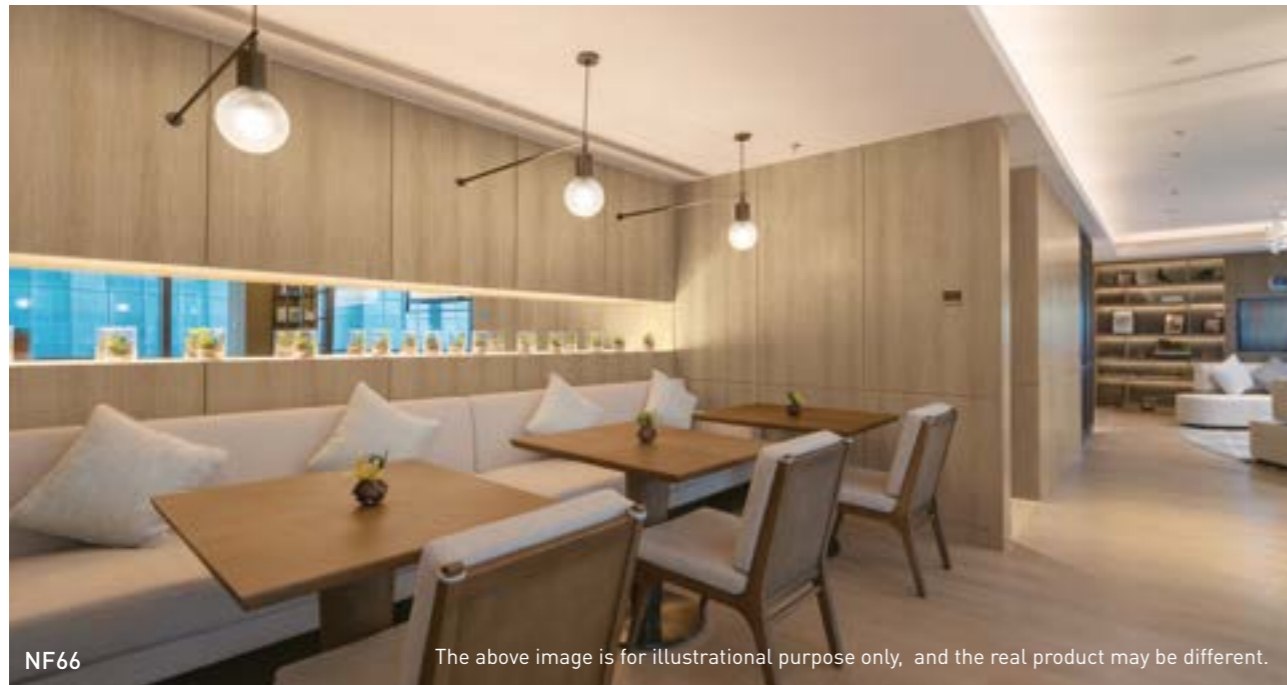
✓ F4



⌚ NF61



# Rich Wood



NF66

The above image is for illustrational purpose only, and the real product may be different.



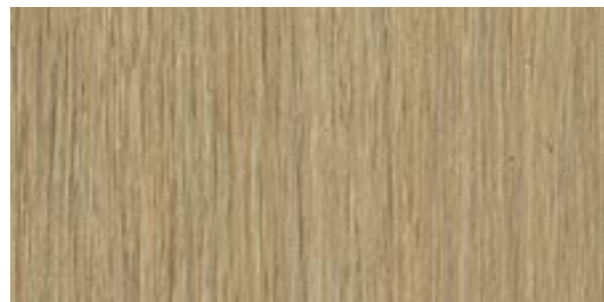
⌚ AA17



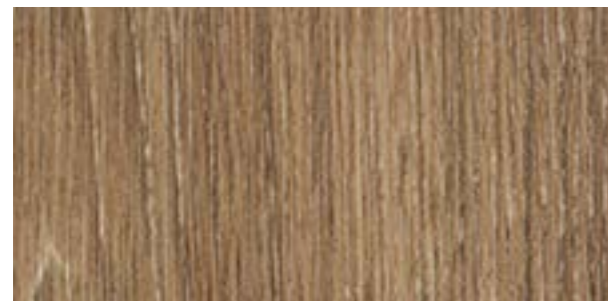
⌚ AA01



⌚ AA13



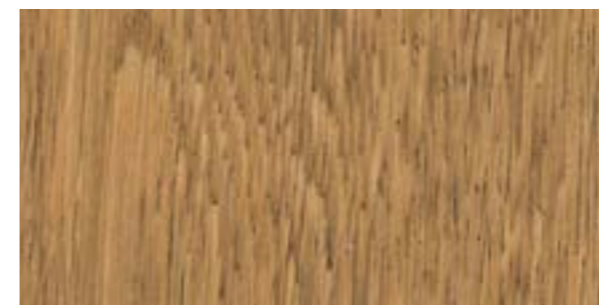
✓ NF66



✓ B8



⌚ NF65



⌚ AA04



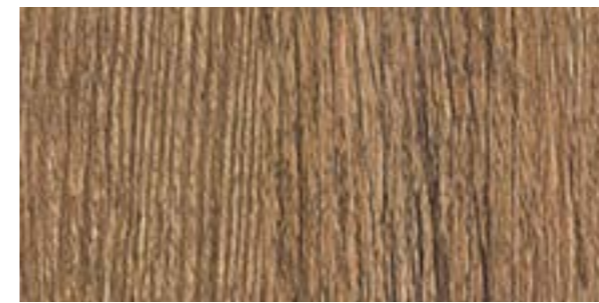
⌚ NF67



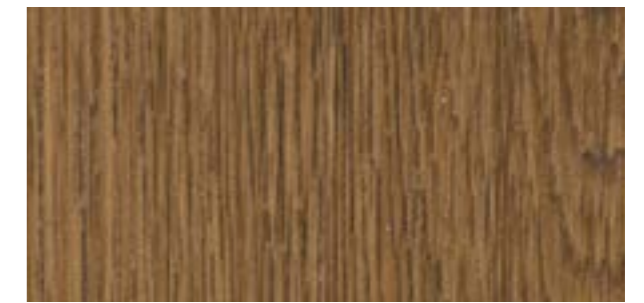
⌚ AA11



⌚ AA02



✓ F5



⌚ AA05

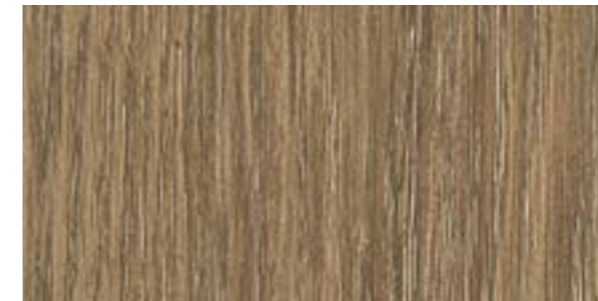


NF67

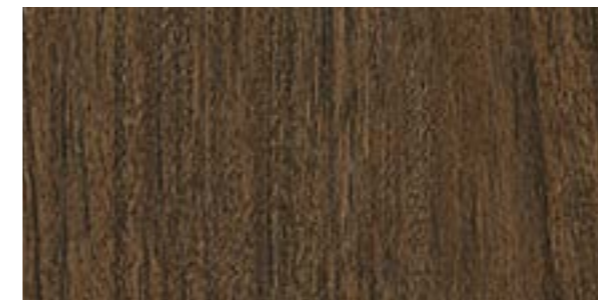
The above image is for illustrational purpose only, and the real product may be different.



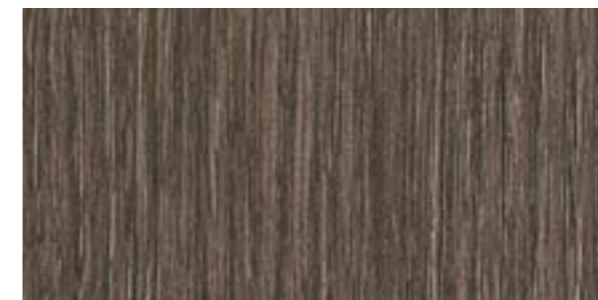
# Rich Wood



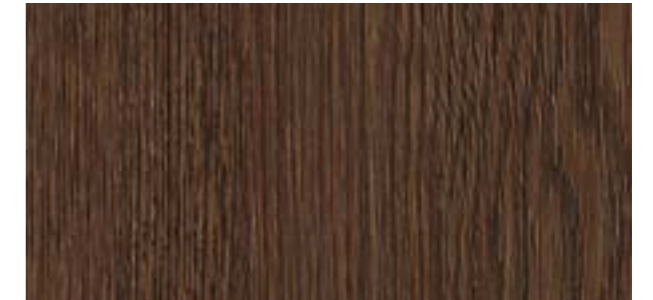
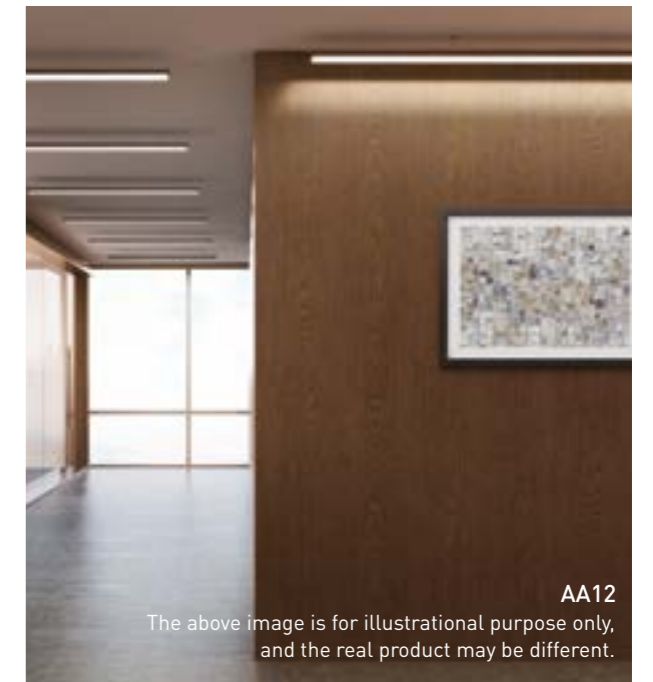
⊖ AA09



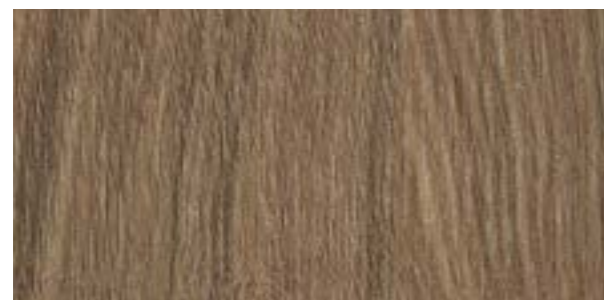
✓ AA14



⊖ AA06



✓ AA12



⊖ NF68



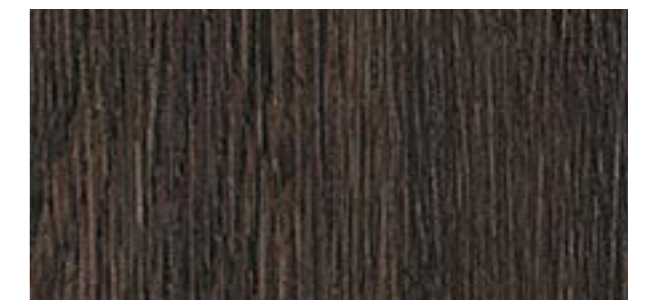
✓ NF70



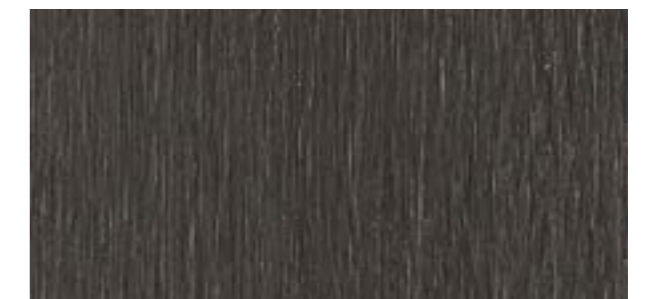
⊖ AA08



⊖ NF69



✓ B9



⊖ NF71



# Rich Wood



✓ AL29



⊗ AG01



⊗ AG07



⊗ AG13



⊗ AL10



⊗ AL23



✓ AG20



⊗ AL36



⊗ AL30



⊗ NF72



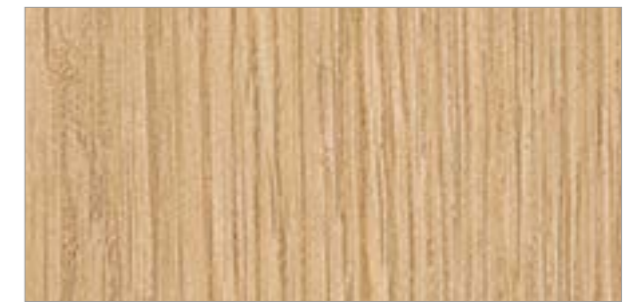
⊗ AL08



⊗ AG02



⊗ AG08



✓ AG14



⊗ AL26



AG11



# Rich Wood



🕒 NF75



🕒 NF76



🕒 NF73



🕒 AG21



🕒 NF74



✅ AL24



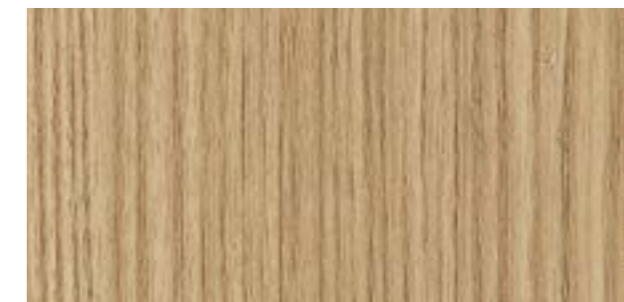
🕒 AG17



🕒 AG09



🕒 AT03



🕒 NF77



🕒 AG18



✅ NF78





# Rich Wood



🕒 NF80



🕒 AG15



🕒 AG16



🕒 AL28



🕒 NF79



✅ B4



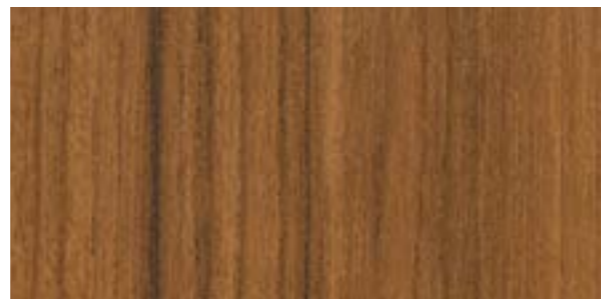
🕒 AT05



🕒 AG10



🕒 AL12



✅ AT04



🕒 NF82



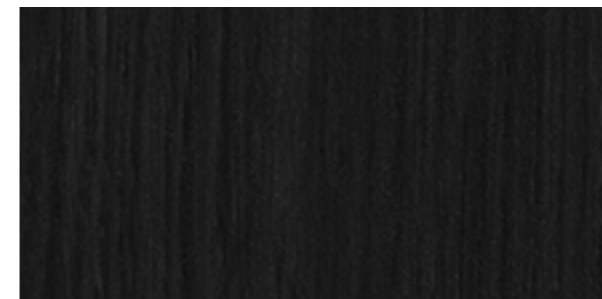
🕒 NF81



🕒 AL25



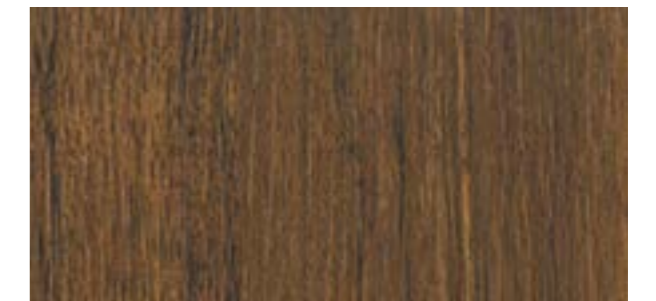
✅ E50



✅ F7



E50  
The above image is for illustrational purpose only, and the real product may be different.



🕒 AT02



🕒 AT06



# Design Wood

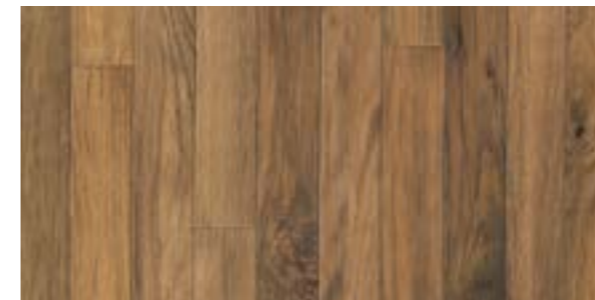


NF83

The above image is for illustrational purpose only, and the real product may be different.



✓ D4



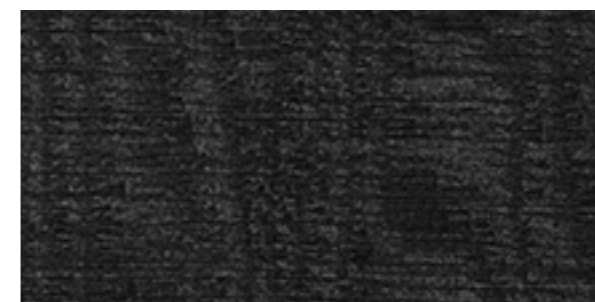
✓ H4



✓ NF83



⊘ NF84



✓ T50



D4

The above image is for illustrational purpose only, and the real product may be different.



# Standard Wood



Ⓞ CT91



Ⓞ CT73



✓ NE63



Ⓞ CT18



Ⓞ CT74



Ⓞ NF85



Ⓞ CT102



Ⓞ CT19



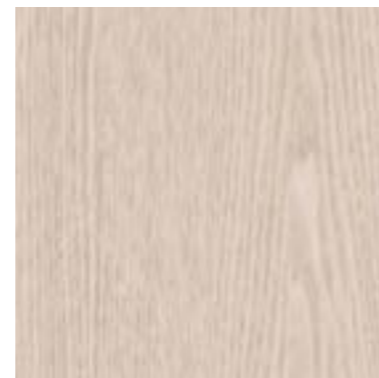
Ⓞ CT13



Ⓞ NF86



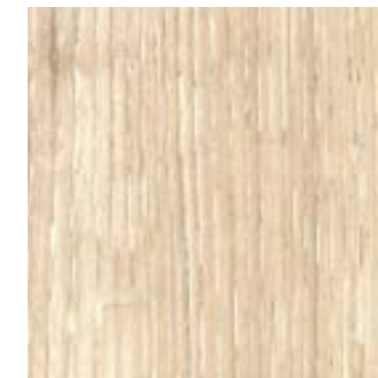
Ⓞ CT95



✓ CT17



Ⓞ NE66



Ⓞ CT76



✓ NE61



# Standard Wood



⊖ NF87



⊖ CT20



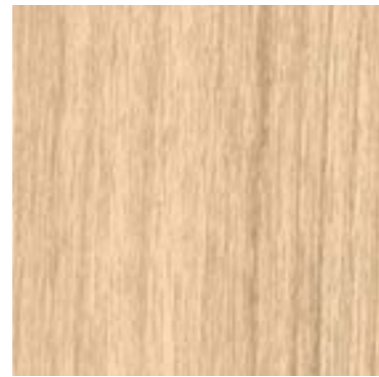
⊖ NE64



⊖ CT28



✓ NE57



⊖ NE65



NF88

The above image is for illustrational purpose only, and the real product may be different.



⊖ CT33



⊖ NF88



⊖ CT49



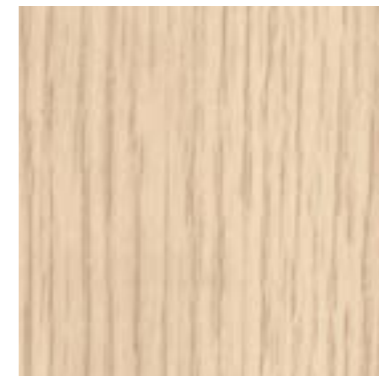
⊖ CT100



⊖ CT92



⊖ CT101



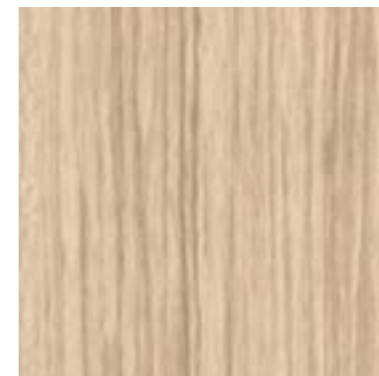
⊖ CT94



⊖ CT93



⊖ CT90



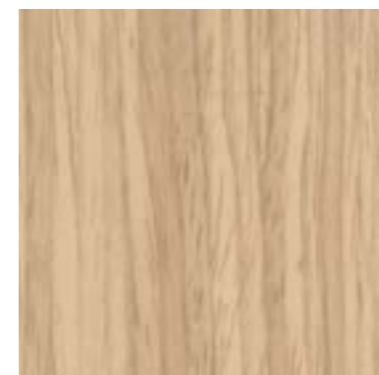
⊖ CT40



⊖ CT14



⊖ CT79



⊖ CT62



⊖ NE67



# Standard Wood



⊘ CT46



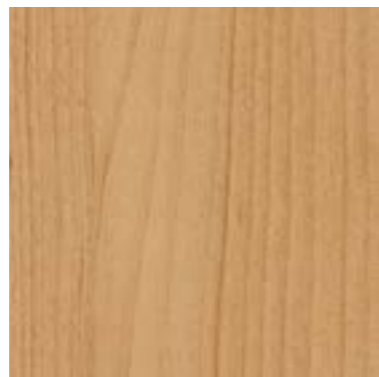
⊘ NF89



⊘ CT48



⊘ CT77



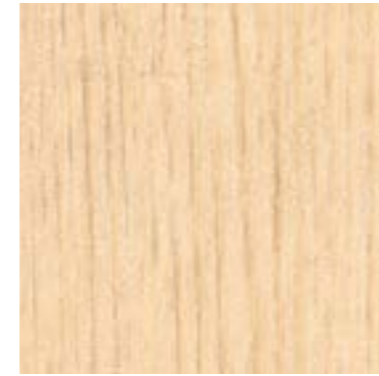
✓ B3



✓ CT82



The above image is for illustrational purpose only, and the real product may be different.



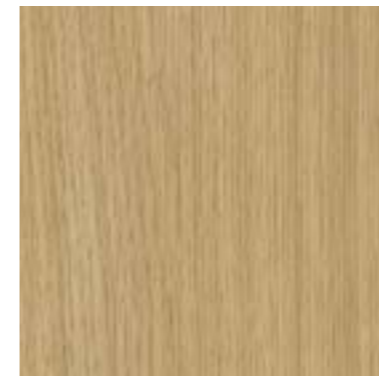
⊘ CT96



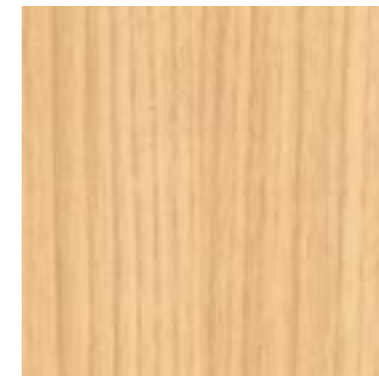
⊘ CT01



⊘ CT41



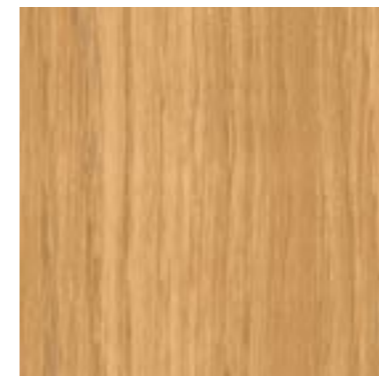
⊘ NF90



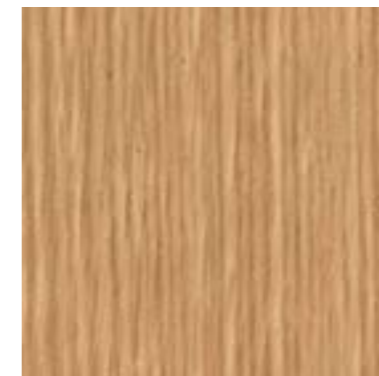
⊘ CT97



✓ I14



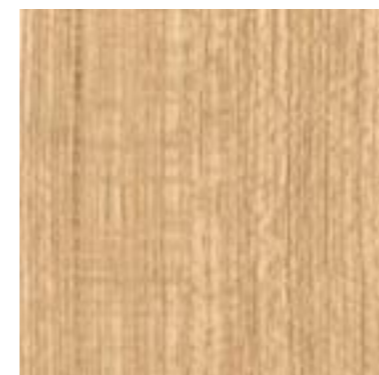
⊘ CT75



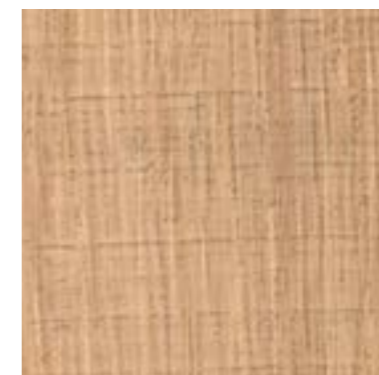
⊘ CT53



⊘ CT87



⊘ CT45



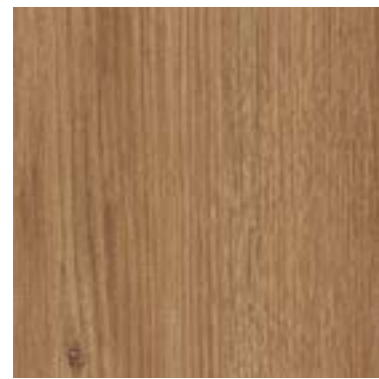
⊘ CT16



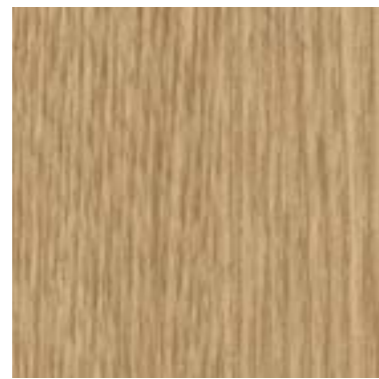
⊘ CT98



# Standard Wood



✓ NE68



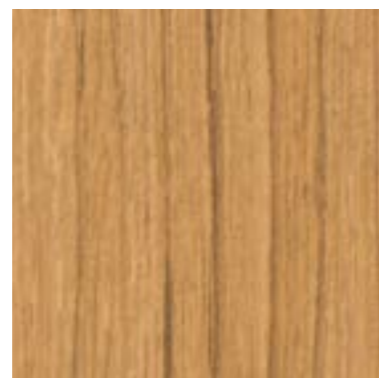
⊗ NF91



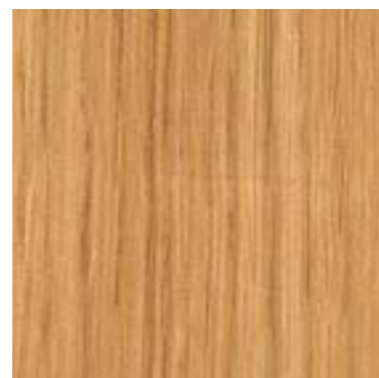
⊗ CT37



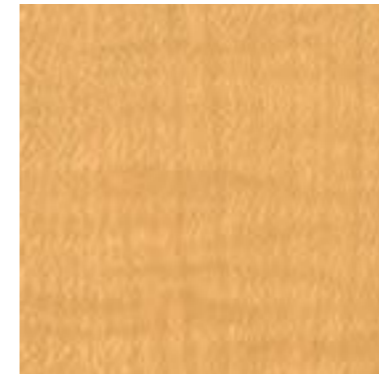
⊗ CT06



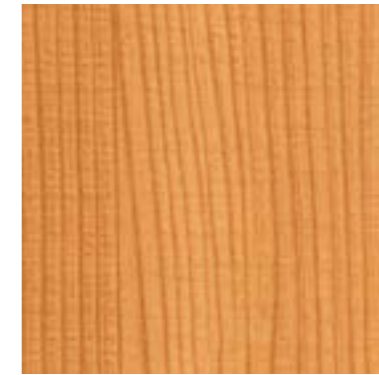
⊗ CT78



⊗ CT99



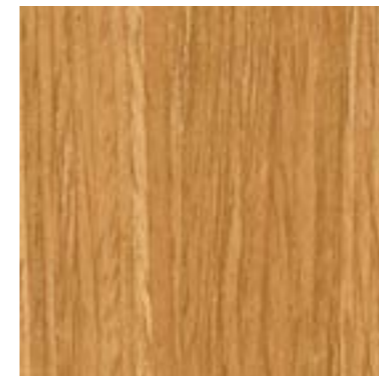
⊗ CT70



⊗ CT11



⊗ CT71



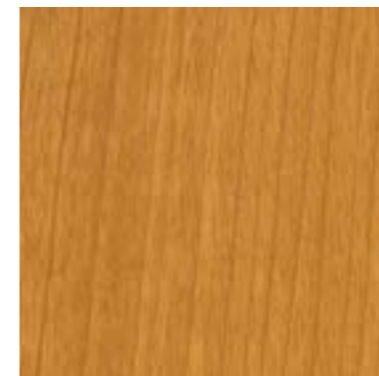
⊗ CT44



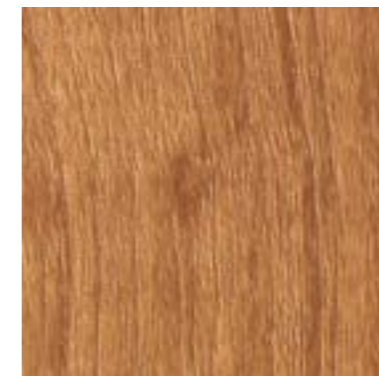
⊗ CT22



✓ B5



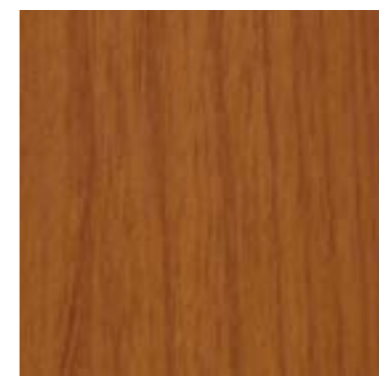
⊗ CT54



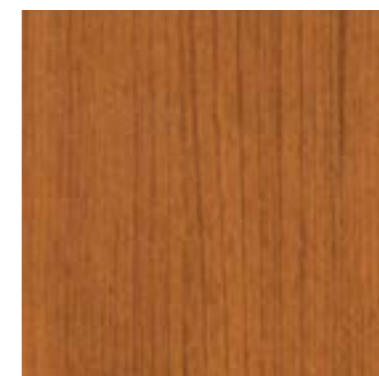
⊗ CT05



✓ B1



⊗ CT09



⊗ CT43



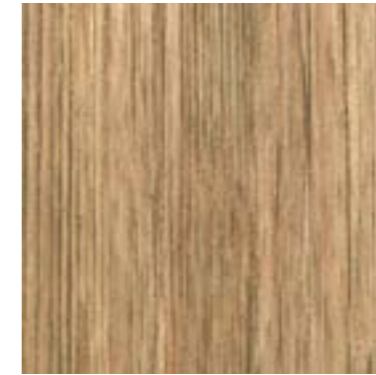
⊗ CT08



# Standard Wood



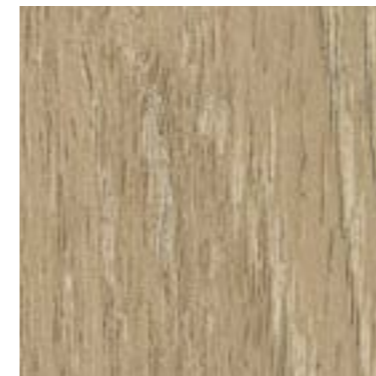
CT84



CT27



CT15



NF96



CT35



CT80



NF94



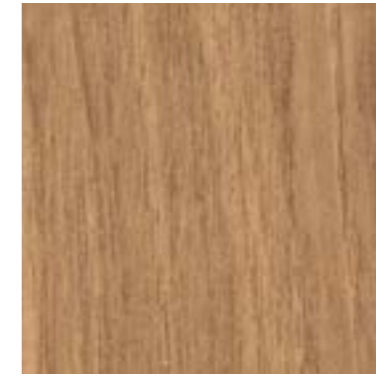
NF92



CT42



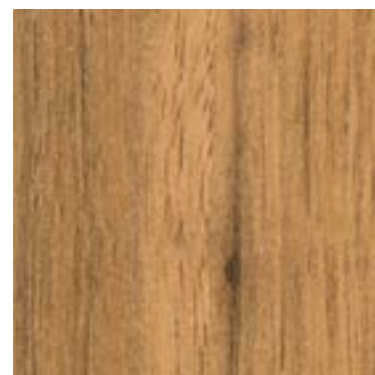
NF95



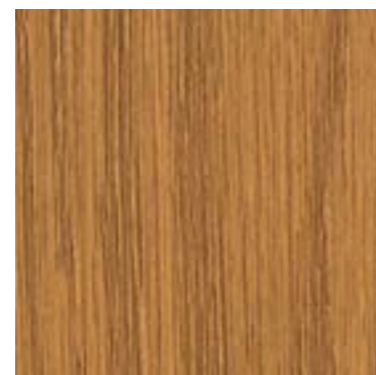
CT36



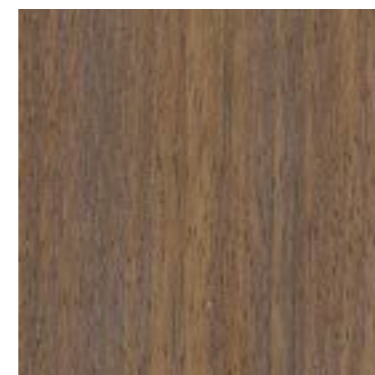
CT60



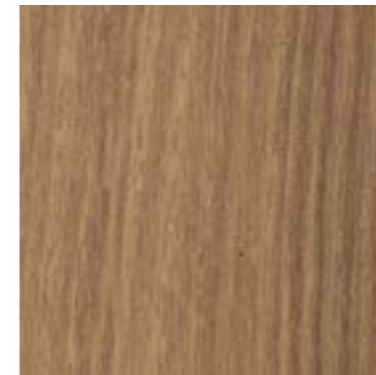
CT02



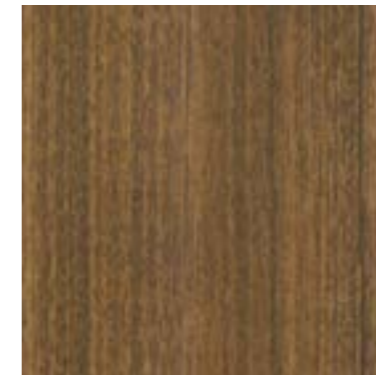
CT10



NF93



CT88



CT56



CT69



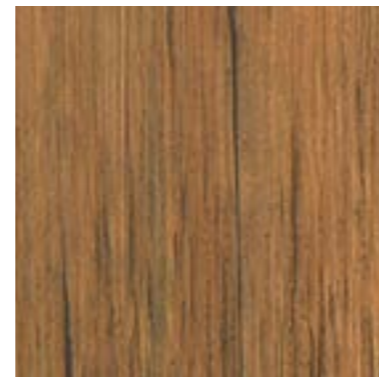
# Standard Wood



⌚ CT21



⌚ NE62



⌚ CT25



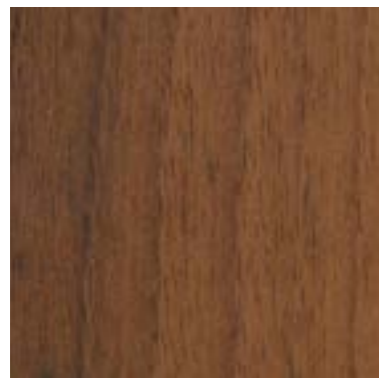
⌚ CT29



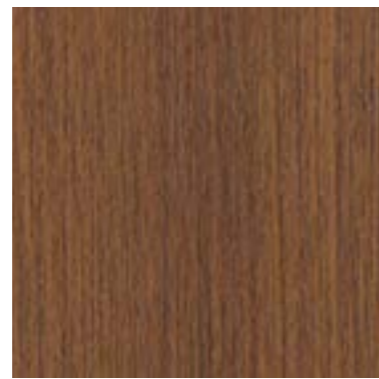
⌚ CT57



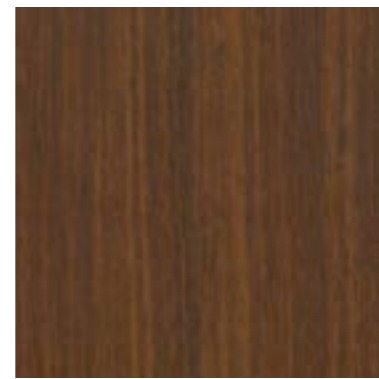
✓ E4



⌚ A4



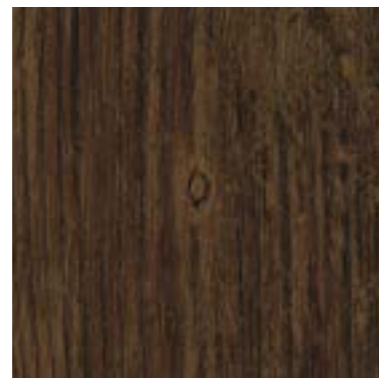
⌚ CT89



⌚ CT24



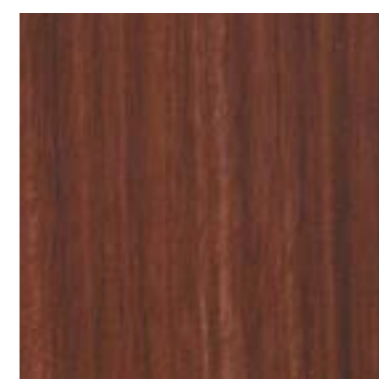
⌚ CT67



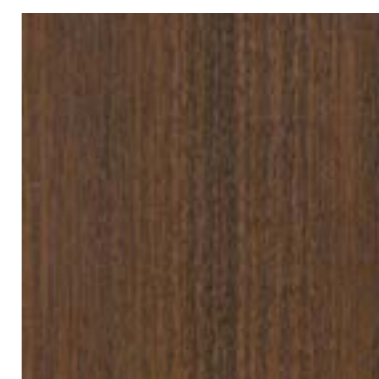
✓ F6



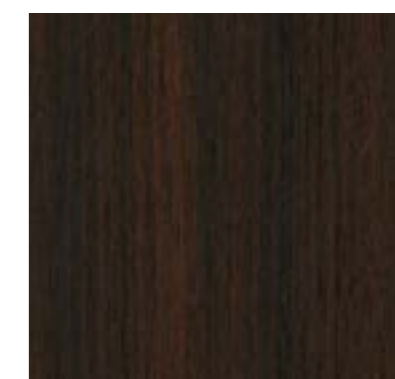
✓ D1



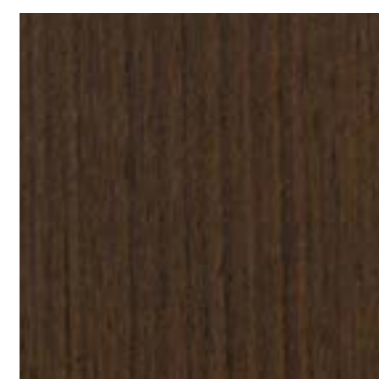
⌚ CT26



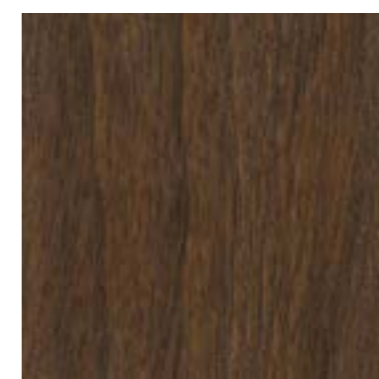
⌚ CT68



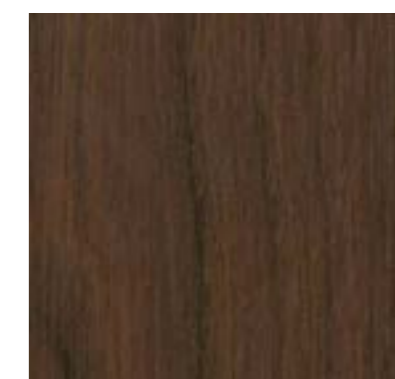
✓ A1



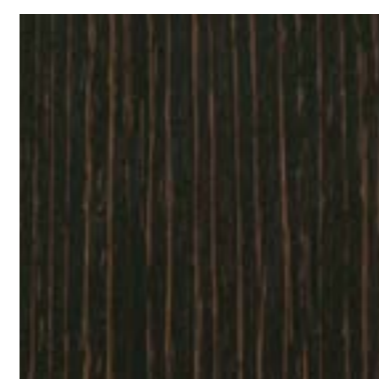
⌚ CT55



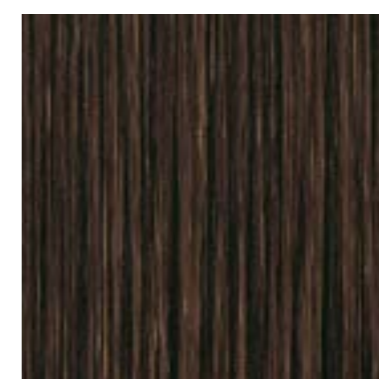
⌚ CT66



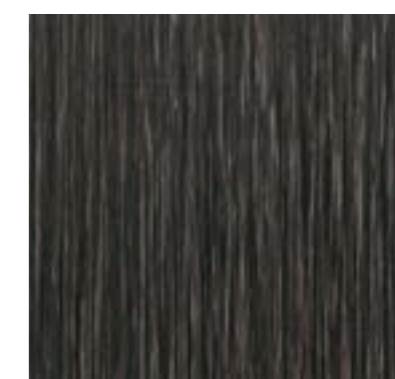
⌚ CT59



⌚ CT50



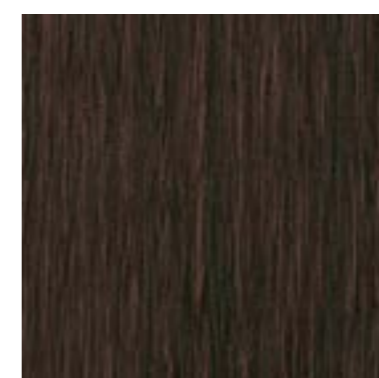
⌚ CT52



✓ H5



⌚ CT04



⌚ CT61



✓ CT58





03

Our Marble range gives a chic touch to all your renovations thanks to its super-realistic graining designs. Dark, grey or white, matt or ash... In small touches or in an all-over look, you are spoiled by choice for renovations with a stamp of luxury. Imagine a matt white work surface or a bathroom with ash black splash back...Discover the sumptuous models that will give your establishment an impressive decorative upgrade.

---

## Stone & Marble



NF98

Fine patterns and colours that will lead to new trends

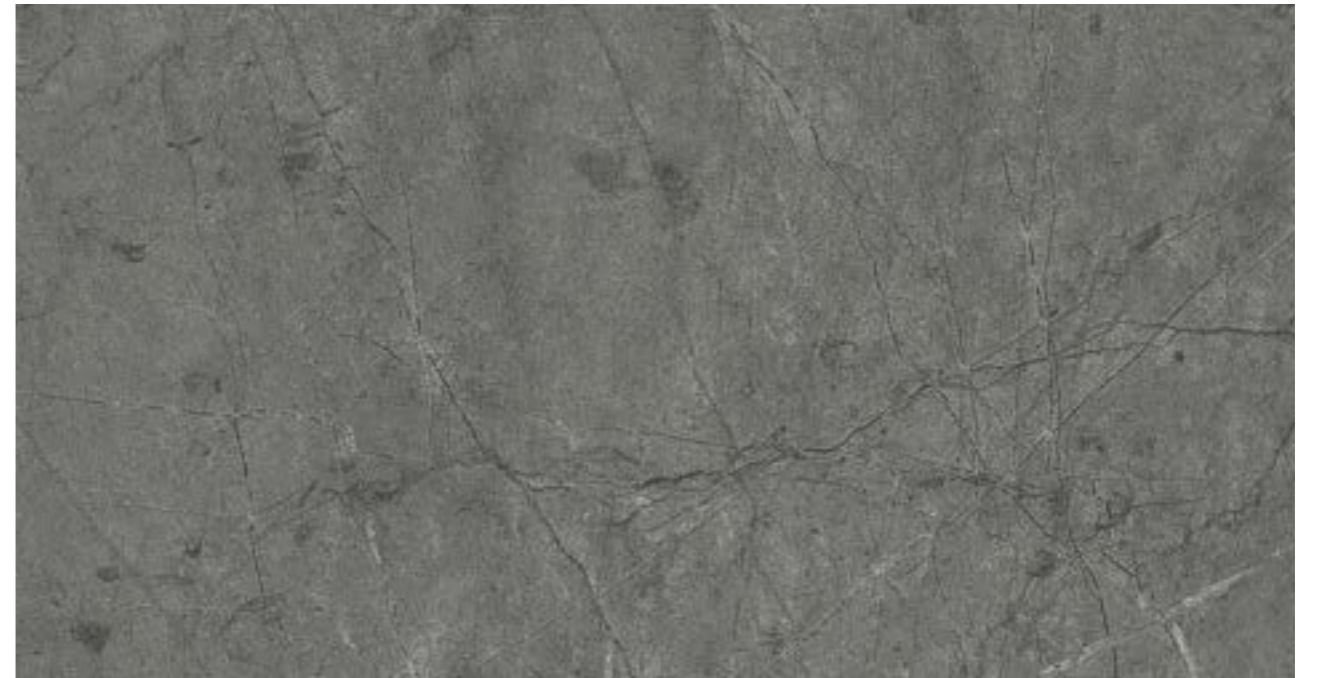


# Premium Marble

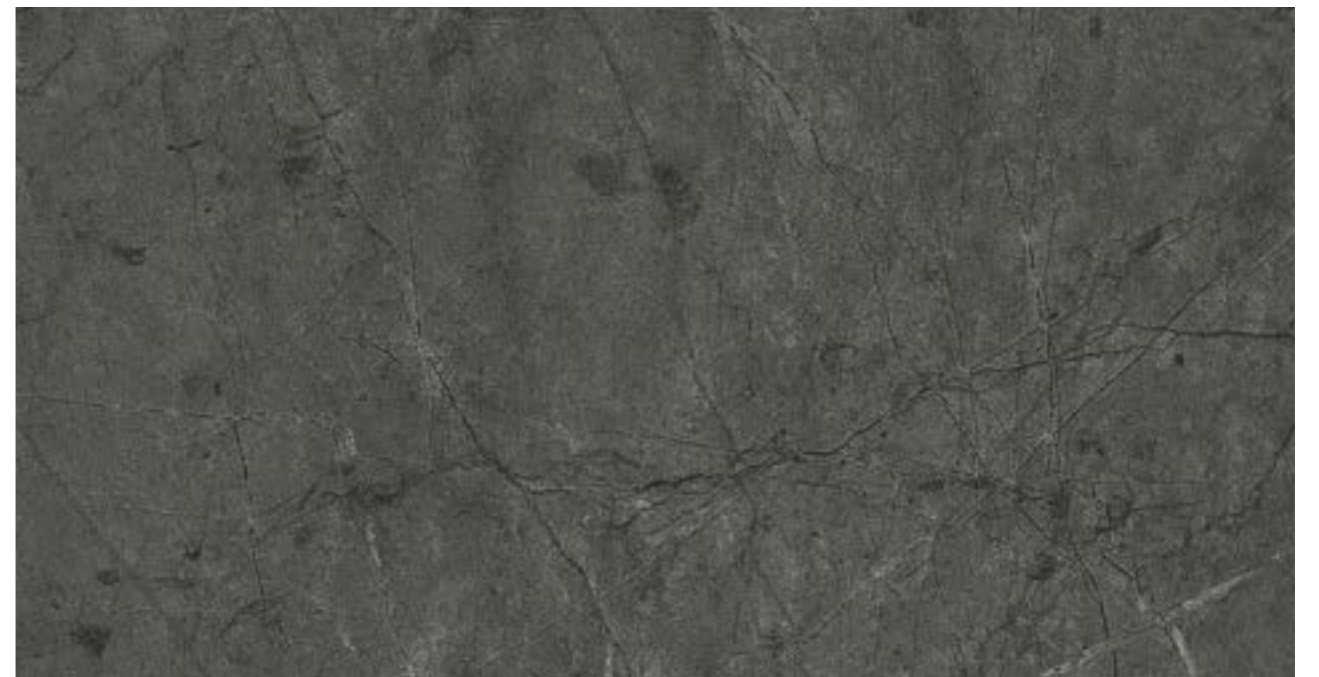


NF98

The above image is for illustrational purpose only, and the real product may be different.



🚫 NF97



✅ NF98



# Premium Marble



NE69

The above image is for illustrational purpose only, and the real product may be different.

✓ NE69



NE70

The above image is for illustrational purpose only, and the real product may be different.

✓ NE70



# Premium Marble



⊘ NG01



⊘ NE71



✓ NF99



NF99

The above image is for illustrational purpose only, and the real product may be different.

# Marble



✓ NE31



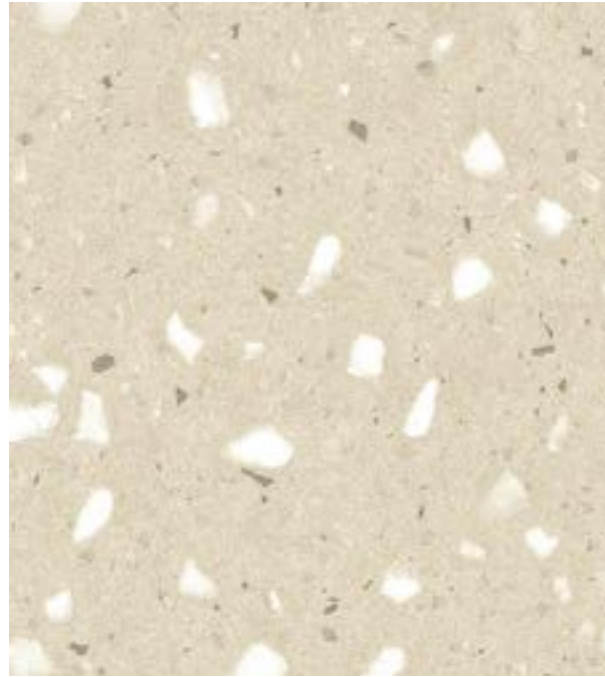
⊘ NE32



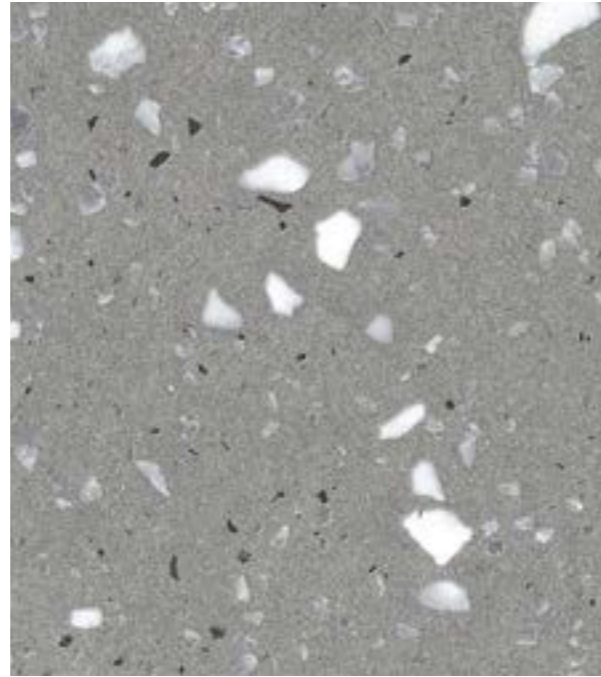
NE31



# Stone & Marble



⊗ NG03



✓ NG02



NG02

The above image is for illustrational purpose only, and the real product may be different.



NG04

The above image is for illustrational purpose only, and the real product may be different.



✓ NG04



⊗ NG05

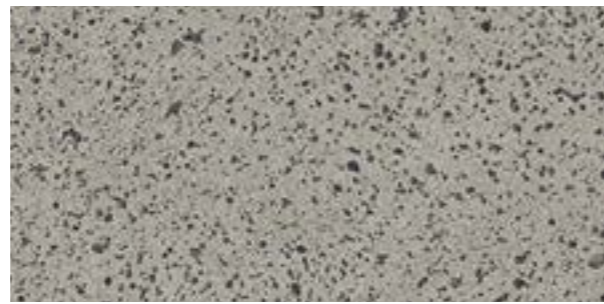


# Stone & Marble

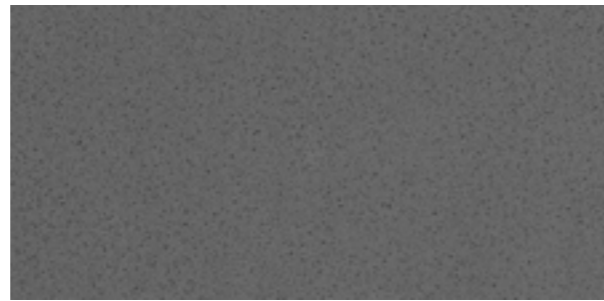


NE72

The above image is for illustrational purpose only, and the real product may be different.



⊗ NE27



✓ NE28



NE28

The above image is for illustrational purpose only, and the real product may be different.



✓ NE72



✓ U50



W7

The above image is for illustrational purpose only, and the real product may be different.



✓ W7



✓ MK15



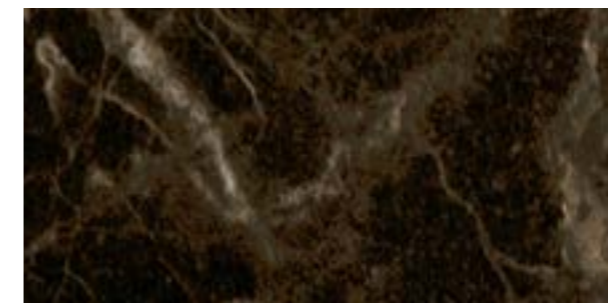
⊗ KN04



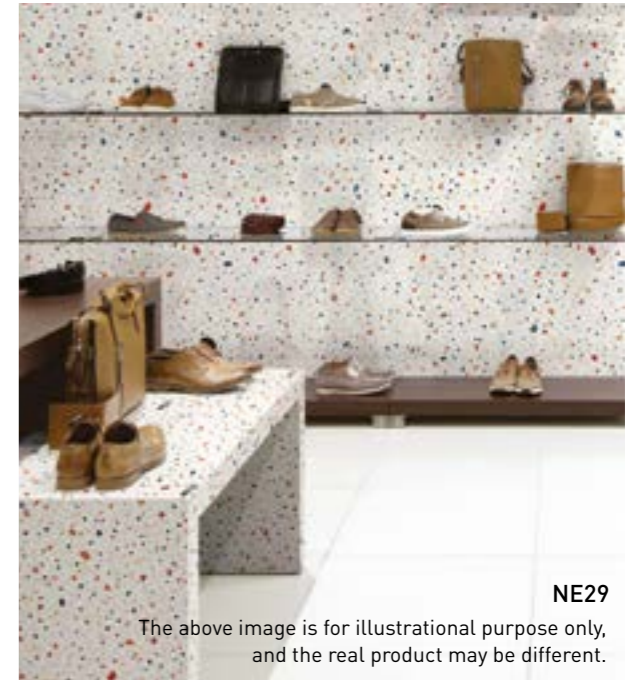
✓ NE29



⊗ KN05



✓ KN02

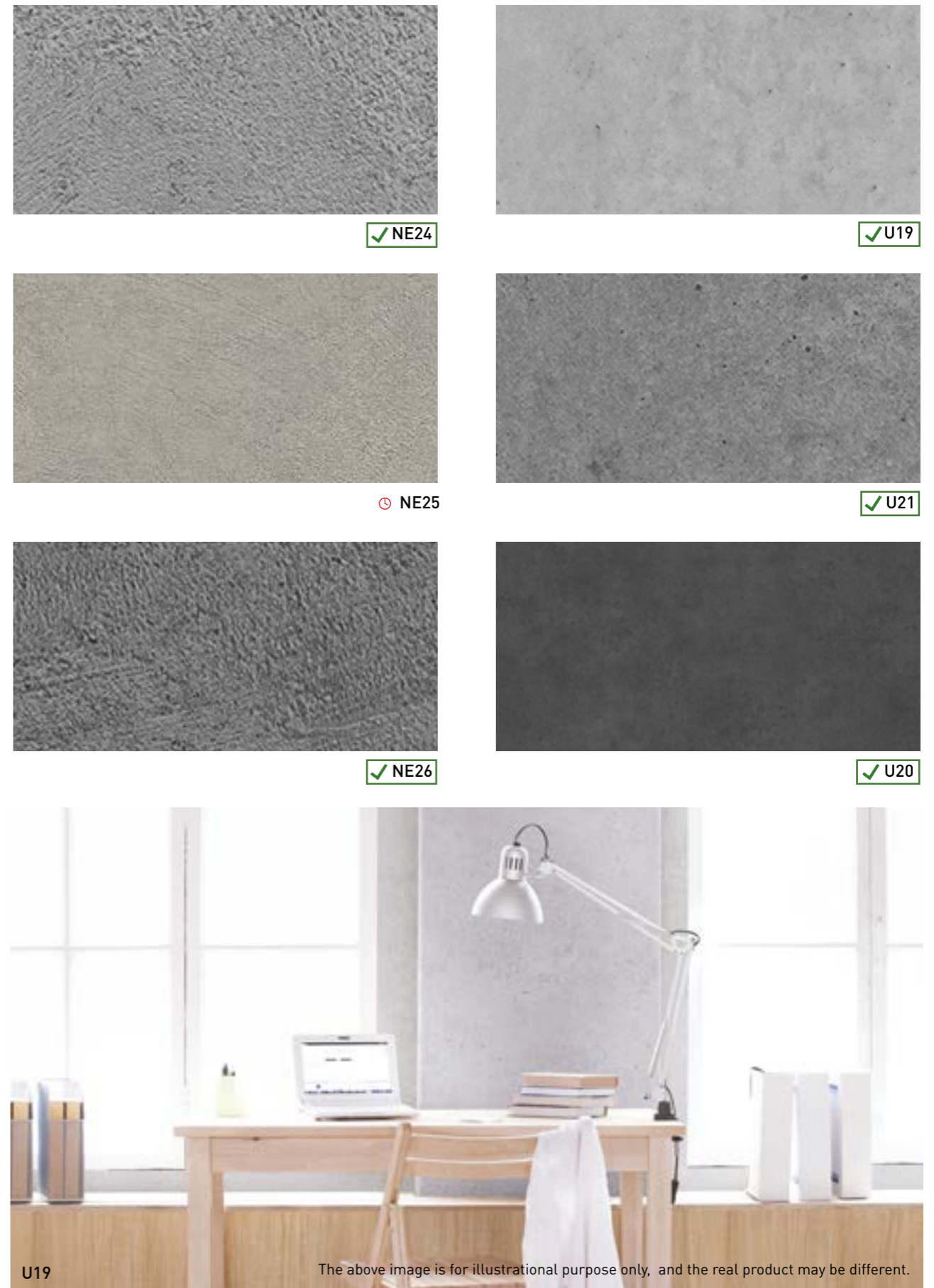


NE29

The above image is for illustrational purpose only, and the real product may be different.



# Stone





04

Unique materials and colours await you in our Textile range. Ideal for creating a modern but unstructured look! Attract the eye and stir emotions in a bedroom or a dining room thanks to the hypnotic textures of the highly numerous models of the range. As in fashion, textile in décor is a matter of good taste and toning.

---

## Natural Surface



NG06

Unique and luxurious texture



# Real Fabric

This product, made by a weaving method of weaving PVC yarns one by one into weft and warp yarns, has natural texture and durability unique to fabric.



✓ NG11



✓ NE74



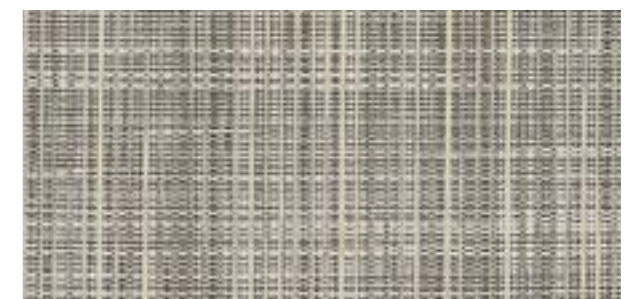
✓ NG10



⊗ NG06



✓ NG07



⊗ NG08



⊗ NG09



✓ NE73

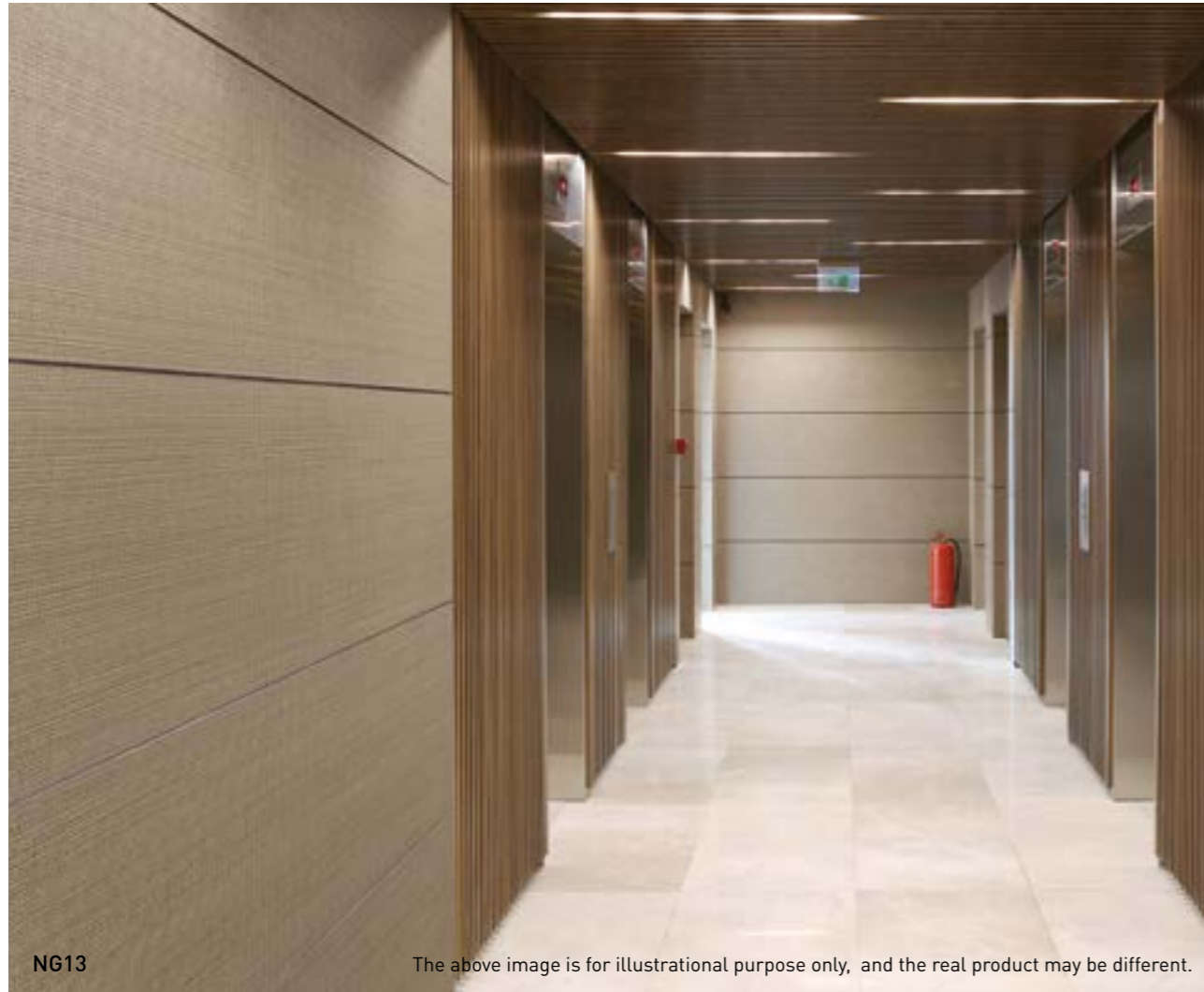


NG10

The above image is for illustrational purpose only, and the real product may be different.



# Fabric



NG13

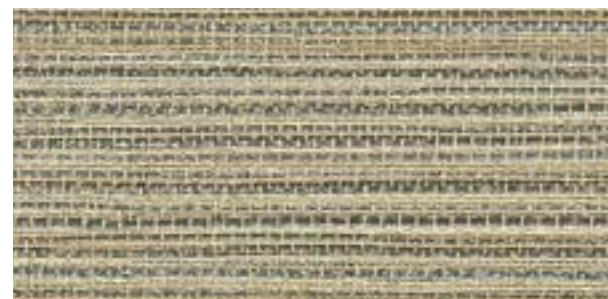
The above image is for illustrational purpose only, and the real product may be different.



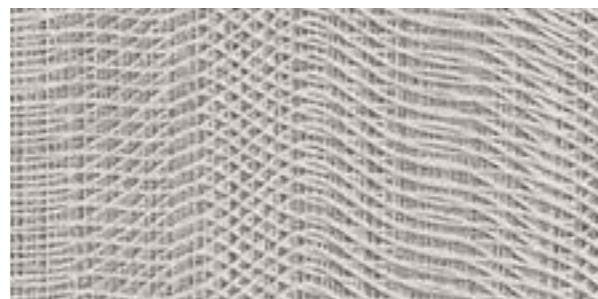
⊗ NG12



✓ MK18



✓ NG13



⊗ MK19



NE37

The above image is for illustrational purpose only, and the real product may be different.



✓ ST02



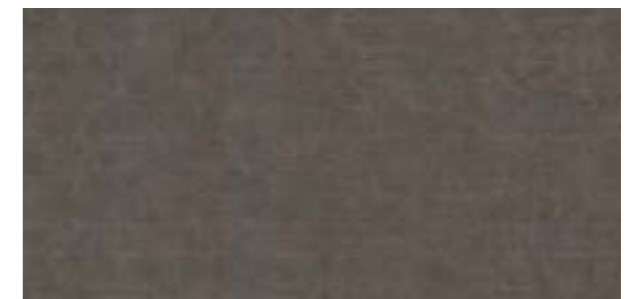
✓ NE38



⊗ NE36



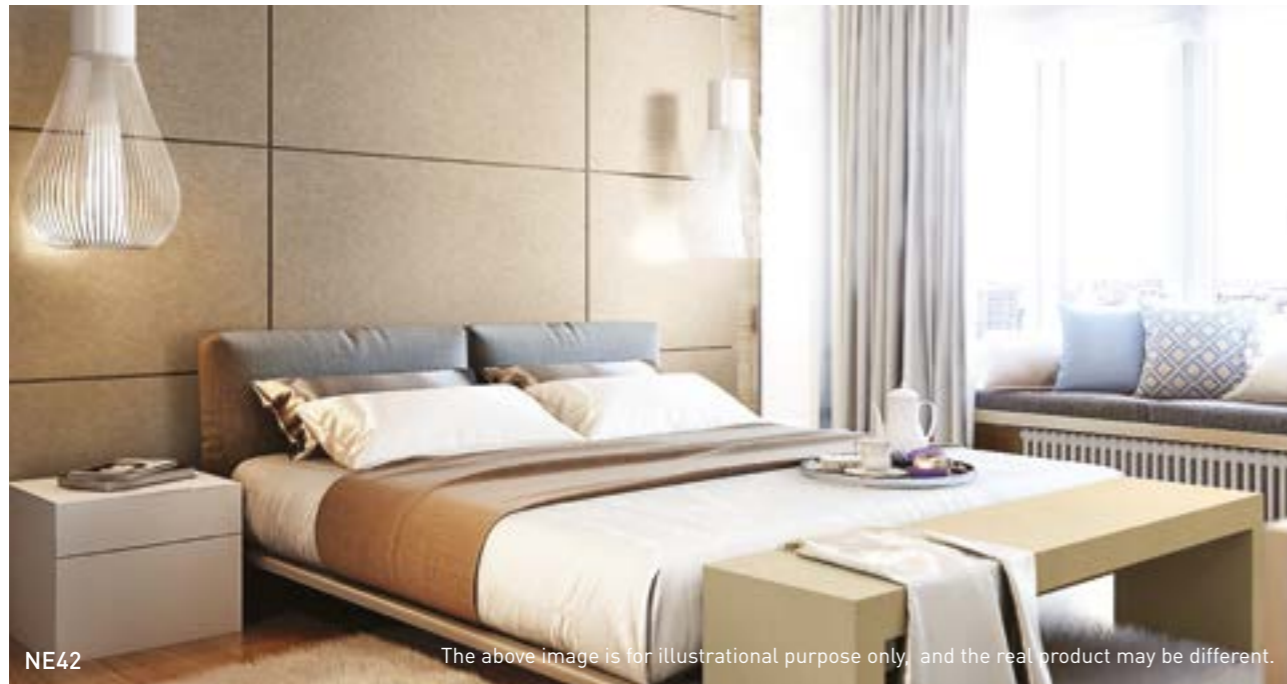
✓ NE37



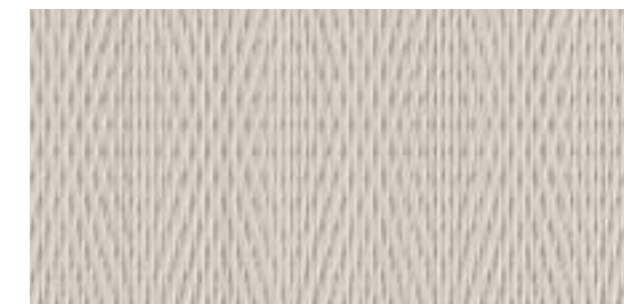
✓ NE33



# Deep Emboss Leather



✓ NG23



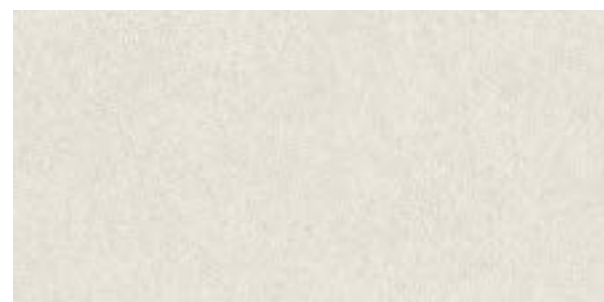
✓ NG20



⊘ NG22



⊘ NG21



✓ NE43



✓ NG19



✓ NE42



⊘ NG18



✓ NE41



✓ NG17







W6

The above image is for illustrational purpose only, and the real product may be different.



U19

The above image is for illustrational purpose only, and the real product may be different.



# Real Metal



NE47 | NE49

The above image is for illustrational purpose only, and the real product may be different.



ND03



ND04



ND07



✓ NE51



✓ NE47



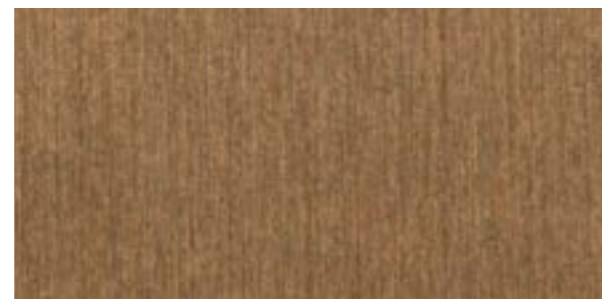
ND01



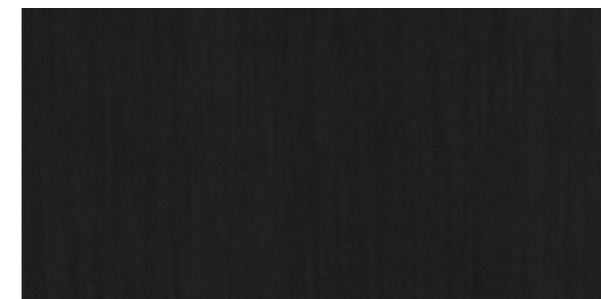
✓ Q50



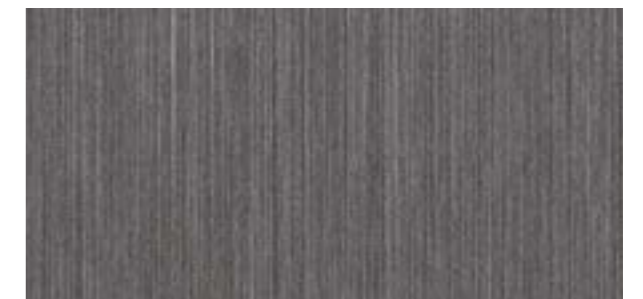
ND02



✓ NE48



✓ NE49



ND05



# Metal



⊗ NG29



✓ NG28



NG28

The above image is for illustrational purpose only, and the real product may be different.



AL15

The above image is for illustrational purpose only, and the real product may be different.



✓ AL11



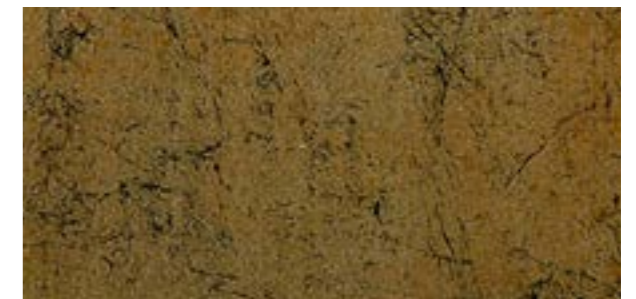
⊗ AL13



✓ AL15

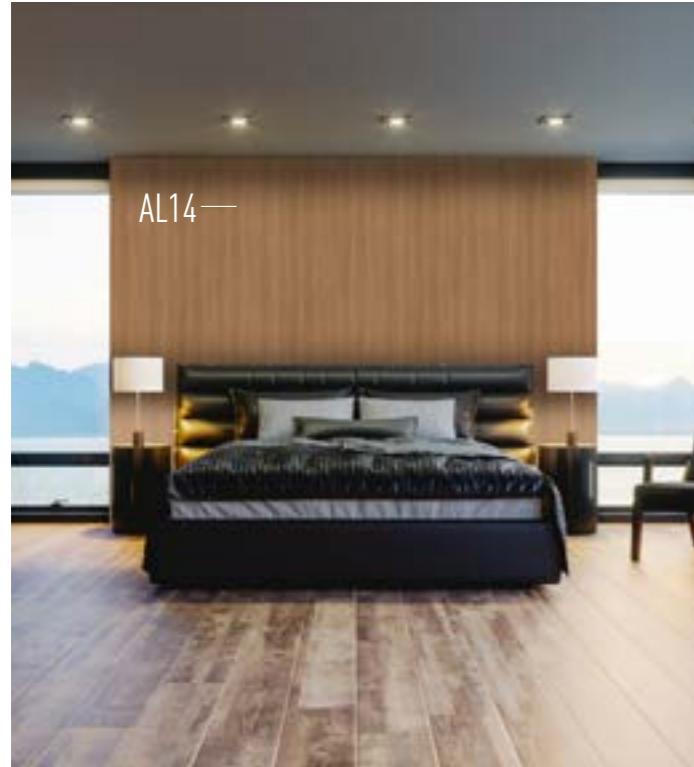


⊗ AL17



⊗ AL07





✓ AA15



✓ AL14



✓ NE13



✓ B6



✓ G6



✓ I10



✓ G0



✓ H10



✓ H50



✓ I7



✓ I9



✓ I11



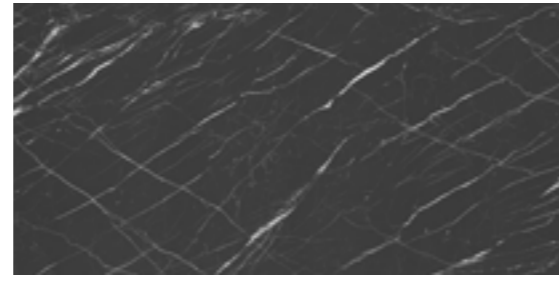




✓NG31



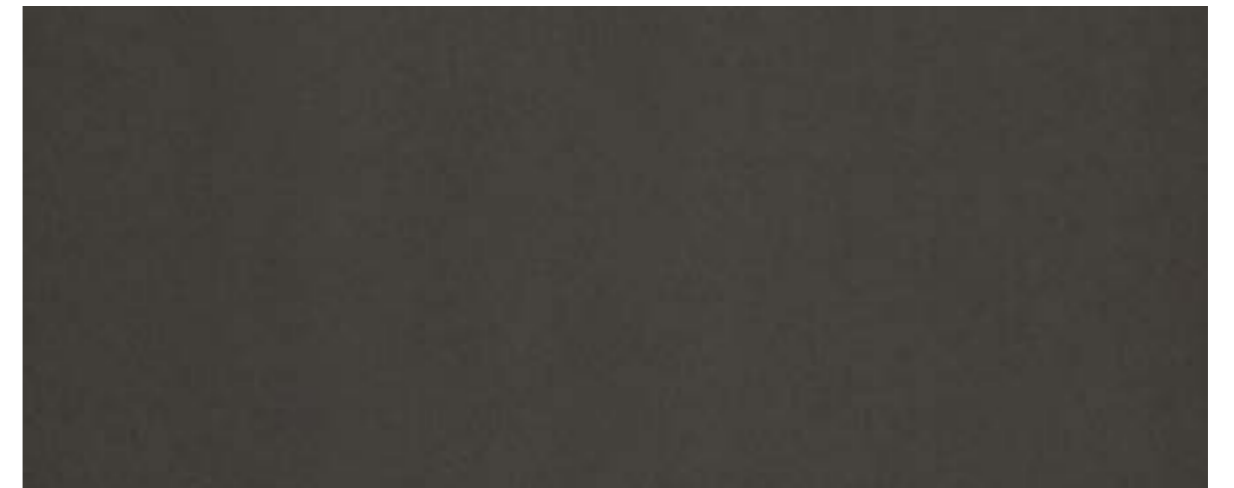
✓MK13



✓MK14



X6



✓NE40



NE40

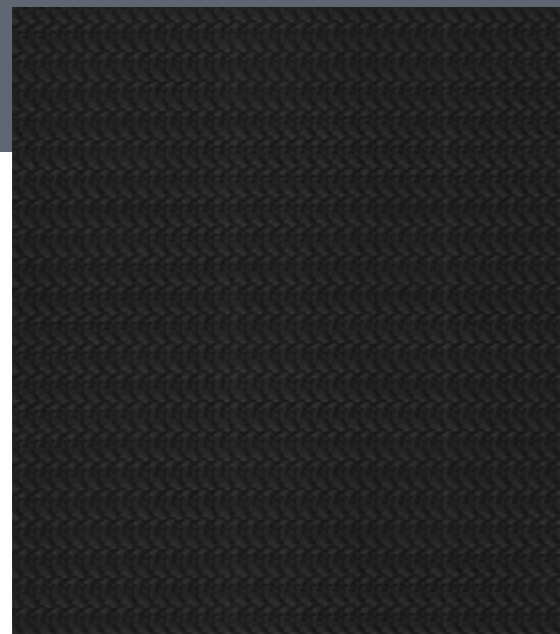
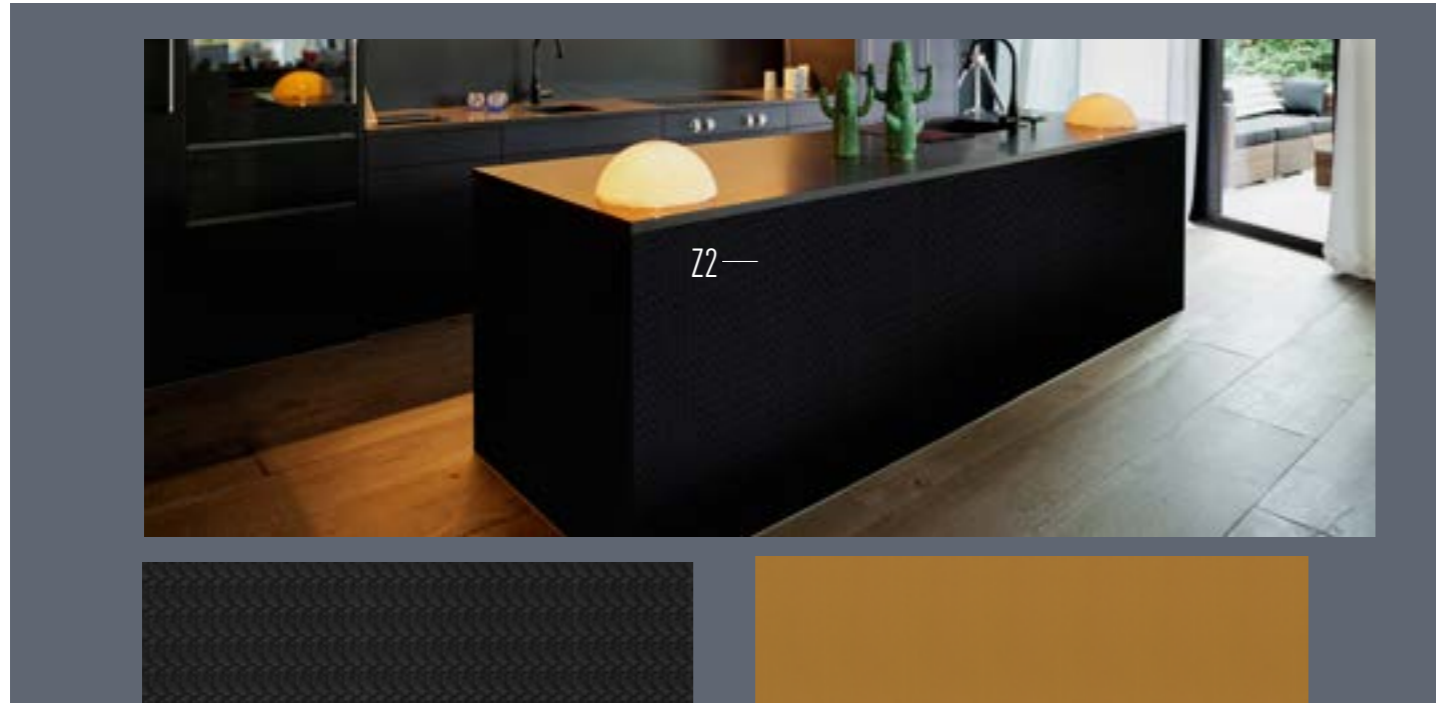


✓X6

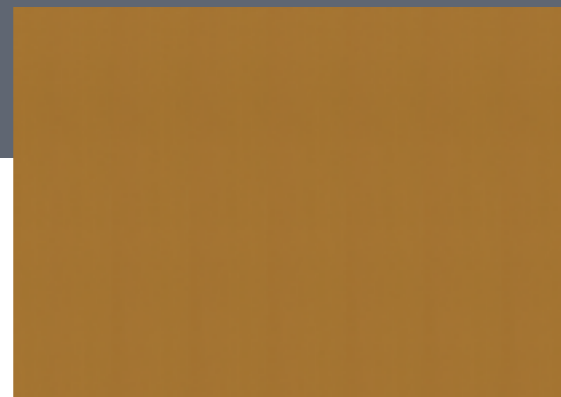


✓X51





✓ Z2



✓ Q3



✓ AL09



✓ T10



✓ T12



✓ K2



✓ 02



✓ 07



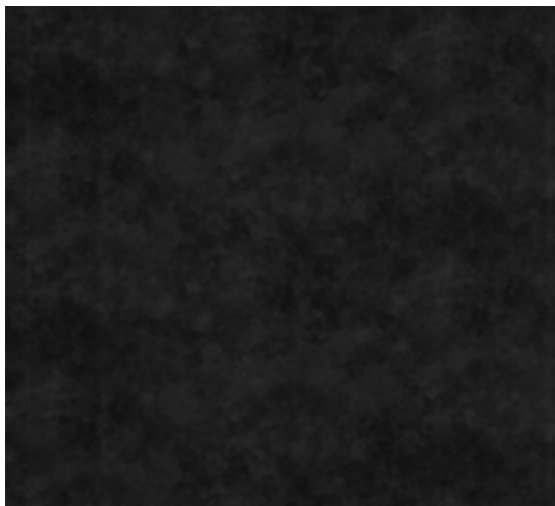
✓ L50







✓W6



✓U10



✓W7



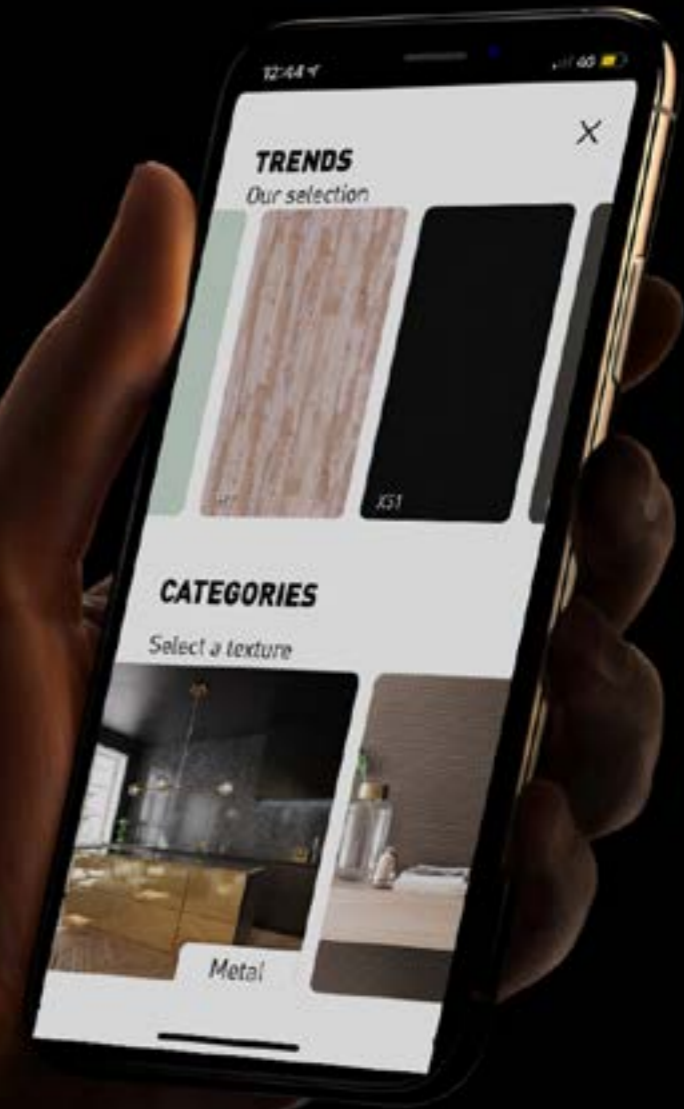
✓W8



✓W9



# DOWNLOAD OUR APPLICATION







MK18

The above image is for illustrational purpose only, and the real product may be different.



RM30

The above image is for illustrational purpose only, and the real product may be different.





Quality



Easy



Fast



Limitless



Cost Efficient

[info@coverstyl.com](mailto:info@coverstyl.com)

